



www.stmarysmiddlewich.cheshire.sch.uk

T: 01606 516171 E: admin@stmrc.uk



Follow us on social media

Newsletter 27.3.26

Newsletter 27th March 2026

Dear Parents/carers

Last Sunday was the fifth Sunday of Lent and this Sunday is Passion Sunday commonly known as Palm Sunday. This is the final Sunday of Lent and the beginning of Holy Week, commemorating Jesus' triumphant entry into Jerusalem. His arrival merges with the solemn anticipation of his suffering, passion and crucifixion. Assemblies next week will focus on the events leading up to his death and resurrection.

REDRIDGE RESIDENTIAL WAS A HUGE SUCCESS!





Rubik's Cube-solving prodigy Jenson

Prodigy Jenson Ward, from Middlewich, first enjoyed trying to solve the cube after receiving the colourful puzzle one Christmas.

But eight months ago, the 10-year-old began 'speed cubing' in earnest and has been working in overdrive ever since to develop his talent.

Now, Jenson is gearing up for his debut on the competitive stage at the World Cubing Association event in Liverpool over the weekend of April 18 and 19.



Free Musical Theatre Classes

Carney Academy Cheshire, based in Sandbach, is offering free musical theatre classes all summer term long to new sign-ups. Classes open to different age groups from 6 to 16.

To find our more, visit: <https://www.carneyacademy.co.uk/musicaltheatre>

To book a free taster class, visit: <https://www.carneyacademy.co.uk/taster-cheshire>

Music for Life

Is your child interested in learning to play a musical instrument? Follow the link for more information and to book your place! <https://www.musicforlife.org.uk/>



Mini Vinnies and the Big Lent Walk

The Mini Vinnies have signed the school up for the Big Lenten Walk which is a great way to put Catholic Social Teaching into action. The money raised will support floating garden projects in countries that are struggling due to the climate crisis, like Bangladesh, where flooding is affecting their harvest. Please see the sponsor form [HERE](#)¹.

Each class will walk to Jack's park in the final week of this term at different times. They will also be able to have a short play before heading back to school.

EARTH HOUR - 28th MARCH

Earth Hour is an annual event where everyone is invited to switch off the lights for an hour to show symbolic support for the planet and to raise awareness of the environmental issues affecting it.

On Saturday 28th March, we are all being encouraged to switch off the lights and other devices between 8:30 pm and 9:30 pm as part of the annual Earth Hour campaign.

This is for just 60 minutes, which might not seem much to make a difference but the magic happens when you, and those like you in Asia and Africa, North and South America, Oceania and Europe - supporters in over 190 countries and territories - all give an hour for our one home, creating the Biggest Hour for Earth.

¹https://assets.ctfassets.net/vy3axnuecuwi/f79547b3e30672327da721cdab64f51bf3cd69e5ee7dc31a7e1ee84e36d15f7b/942d28af57fc13392eada495224c5d05/TBLW_Sponsorship_form_A4_v2.pdf



THE MAGICAL SUITCASE WORKSHOP

Madame Dellapiana combined global travel with National Theatre day in her Modern Foreign Language themed day today.

Her workshop title is "**The magic suitcase adventure**". KS2 children prepared and performed a short simple play focused on a group of children travelling around the world (specifically France, Spain and Italy) thanks to a magical suitcase.

In their journey they learnt a few facts / customs about each country they visited as well as a few keywords. They made props such as Spanish paper fans and some classes performed a flamenco dance.

Y1 and Y2 learnt greetings in a range of languages, prepare flags and performed Magic the song 'Hello to all the children of the world'.







Y3 Residential Kit List for Pettypool 23rd and 24th April



- Packed lunch for first day
- Sleeping Bag/ Duvet
- Waterproof jacket and trousers if you have them (we have spares)
- Wellies if you have them (marked clearly with your child's name)
- 2 pairs of old trainers
- 2 Pairs of warm trousers – e.g. tracksuit bottoms (not jeans)
- 2 warm sweaters / hoodies / fleeces
- 3 T-Shirts (ideally non-cotton: sports shirts / base layers are ideal)
- At least 3 pairs of socks (including 2 pairs of thick socks)
- Hat and Gloves
- Underwear
- Towel
- Toiletries (soap, shampoo, toothbrush, etc)
- Nightwear / pyjamas
- Torch & spare batteries
- Water bottle – at least ½ litre – an old juice bottle will do

- Slippers or indoor footwear
- 1 set of clothes for non activity time
- Bin bag for taking home wet clothes
- Pocket Money for Centre souvenir shop (we recommend £10 at most!)

Medication: if you have an epipen make sure you bring two.

Optional Extras:

- Walking Boots
- Disposable Camera
- Sunglasses, hat, suntan lotion and insect repellent in the summer time
- If you wear glasses, a spare pair should be brought along

It is important to remember that activities will be hard on clothes so – the older the better!

[Collection4clothes](#)

Thank you to everyone that has placed clothes into the Collection4clothes box outside the chapel corridor, we've already had to request our first collection as the box was overflowing!

Please bring bags of clothes and any listed items and place them in the recycling unit to continue to raise funds for school.

[PTA - Rainbow Raffle Non-Uniform Day - 26th March 2026](#)

The Rainbow Raffle Non Uniform day was a huge success, thank you to everyone for the kind donations!





Thank you to Dutton Builders Merchants



TRADE AND PUBLIC
WELCOME

TEL: 01606 738491

Thank You

A HUGE thank you to
Duttons for donating
materials for our peace
garden at St Mary's Primary
School



Diary Dates School Trip Reminders

Diary Date Reminders 2026

Monday 30 th March	Y3 <u>Pettypool</u> - Residential Parent Presentation
Thursday 2 nd April	- Y3 Chester DEVA Roman Museum - School closes for Easter at 13:30
Monday 13 th April	School Reopens at 8:30am
Wednesday 15 th April	Y3 Swimming Commences
Tuesday 14 th , Wednesday 15 th and Thursday 16 th April	Parents' evening for Y3, Tuesday 14 th and Thursday 16 th April Parents' evening for Rec - Y5, Wednesday 15 th and Thursday 16 th April.
Thursday 23 rd to Friday 24 th April	Y3 Residential to <u>Pettypool</u> .
Friday 22 nd May	School closes for Whit
Monday 8 th June	School opens for the summer term
Wednesday 17 th June	Y5 Activities' Day at St Nicholas High School
Tuesday 7 th & Wednesday 8 th July	Y6 Transition Days to St Nicholas High School
Friday 10 th July	Summer fair 3pm onwards
Tuesday 14 th July	Year 6 production 6pm (advance notice)
Thursday 16 th July	Leavers Mass

Cost	Place	Year Group	Date
£25.40	Chester DEVA Roman Museum	3	Thursday 2 nd April 2026
£112	Pettypool	3	23 rd to 24 April 2026

Community Notices

ST MARY'S CATHOLIC PRIMARY
Middlewich

... **SEN** ...
Coffee morning

24/1/26, 7/3/26, 18/4/26
Manor Lane, CW10 9DH

Opportunity to chat!
10 - 11am

Come and talk to other parents about SEN.

The Wych Centre Presents



YOUTHIE

Thursdays | 5:45pm - 7:15pm
**Arts & Crafts, Dancing,
 Sports & Games plus much more...**
**Come Along and Make some
 new Friends!**

Ages 8-12
 £3 per week

P.S. There's also a Tuck Shop




Explore Nature, Art, Science and Technology across West Cheshire Museums at **Museum Explorers club!**

Come and make some exciting discoveries with us this Spring!

Victorian Toys: 8th April
Aboriginal Art: 15th April
 11am-12pm & 12pm-1pm



Outstanding Owls: 9th April
Art Discover Day: 16th April
 11am-12pm & 12pm-1pm



Eggy Experiments: 10th April
Investigating Seasons: 17th April
 11am-12pm & 12pm-1pm



Booking necessary, £5 per session. To book, pop in to see us or call:

Weaver Hall Museum: 01606 271646

Lion Salt Works: 01606 275066

Grosvenor Museum: 01244 972197



CHILDRENS FREE CRAFTS

THIS SPRING BREAK!



SAVE THE DATE

- Tuesday 7th & Wednesday 8th - Owl Masks @ Grosvenor Museum, Chester
- Wednesday 8th & Thursday 9th - Easter baskets @ Lion Salt Works, Northwich
- Thursday 9th & Friday 10th - Miniature hobby horse @ Weaver Hall Museum & Workhouse, Northwich
- Tuesday 14th & Wednesday 15th - Story Cubes @ Grosvenor Museum, Chester
- Wednesday 15th & Thursday 16th - Rainbows @ Lion Salt Works, Northwich
- Thursday 16th & Friday 17th - Spring wreaths @ Weaver Hall Museum & Workhouse, Northwich

Friends of Fountain Fields annual

Easter Egg Hunt

Fountain Fields Park

Saturday 4th April 2026

11am until 2pm

Scan the QR code for more details



Solve the clues to win Easter eggs!
Plus games & art!

FREE EVENT Sponsored by





GROWING FEELINGS

PARENT-CHILD GROUP
EMOTIONAL LITERACY SUPPORT APPROACH
(ELSA)



Are you a parent/carer looking to enhance your understanding & support your 3 or 4 year olds emotional development?



Join us in a safe and welcoming space where we explore our feelings, build emotional literacy, and support one another. A chance to connect with other parents and explore play-based learning with your child.

Across the 5 weeks we will explore:

Parent only workshop (week 1): 2.5 hours

This workshop is for parents only, creating space for open conversation & focused learning without distractions. A crèche will be available for families who need childcare during the session.

Following weeks: 4 play-based sessions (1.5 hour)

The following 4-weeks will be play-based sessions for parents and children, where practical strategies are explored & modelled by ELSA-trained Start for Life Portage Practitioners. Sessions are informed by psychology, with a gentle focus on understanding regulation for both you and your child.

Upcoming Groups:

Oak Tree Family Hub - 01270371250

21st April 09:15-11:45

28th April, 5th May, 12th May, 19th May at 10:00 - 11:30



Local Support and Services

Cheshire East Holiday Activities and Food (HAF) Programme is here for the Easter 2026 school half term holiday – Places are limited so please book early to avoid disappointment.

Go to the Cheshire East HAF Programme booking platform² to view the activities on offer, and when you find an activity you like, select book and complete the booking information.

For more information about the programme and eligibility criteria visit the Cheshire East webpage Holiday activities and food programme (HAF) (cheshireeast.gov.uk)³

²[https://links-](https://links-2.govdelivery.com/CL0/https:%2F%2Feequ.org%2Fcheshireeasthaf%3Futm_medium=email%26utm_source=govdelivery/1/0101019cf5fa58ca-bea8f0d9-6ad5-4335-b4de-97cb35ca0acc-000000/XfUnTigaL6vf0odOtNzH38otx4nf7VuRUzrTsL1o3JY=448)

[2.govdelivery.com/CL0/https:%2F%2Feequ.org%2Fcheshireeasthaf%3Futm_medium=email%26utm_source=govdelivery/1/0101019cf5fa58ca-bea8f0d9-6ad5-4335-b4de-97cb35ca0acc-000000/XfUnTigaL6vf0odOtNzH38otx4nf7VuRUzrTsL1o3JY=448](https://links-2.govdelivery.com/CL0/https:%2F%2Feequ.org%2Fcheshireeasthaf%3Futm_medium=email%26utm_source=govdelivery/1/0101019cf5fa58ca-bea8f0d9-6ad5-4335-b4de-97cb35ca0acc-000000/XfUnTigaL6vf0odOtNzH38otx4nf7VuRUzrTsL1o3JY=448)

³https://links-2.govdelivery.com/CL0/https:%2F%2Fwww.cheshireeast.gov.uk%2Fschools%2Fholiday-activities-and-food-programme-haf.aspx%3Futm_medium=email%26utm_source=govdelivery/1/0101019cf5fa58ca-bea8f0d9-6ad5-4335-b4de-97cb35ca0acc-000000/DldWxGawNTUoEcBAWDdunWgUxpTVfbw0HSETLBTkMdU=448

Decreasing Depression



FREE online talk by

Book online www.facefamilyadvice.co.uk

Parents - Live Talks page

Jane Keyworth

FACE family Advice Lead Facilitator

23rd April 7-8pm

Household Support Fund Information

<https://www.cheshireeast.gov.uk/council-and-democracy/council-information/financial-support/household-support-fund.aspx>

Middlewich & District Foodbank



**We're
here
to
help.**

Middlewich & District
Foodbank is here to support
your school community.



EMERGENCY FOOD

Parcels are available with essentials like milk, tinned foods, cereals, pasta, rice, biscuits.

REFERRAL

Your school can facilitate a confidential referral to ensure you receive the help you need.

NEXT STEP

Get in touch with the Food Bank via the details below, through your school office, doctor's surgery or social worker.

Telephone

0771 227 9949

Email info@middlewichdistrict.foodbank.org.uk

Middlewich IT Sessions



FREE IT SESSIONS

DO YOU LACK CONFIDENCE IN FINDING YOUR WAY AROUND YOUR PHONE OR TABLET?

If so, please come along to St Mary's Catholic Primary School (Manor Lane, Middlewich) on:

Saturday 24th January
Saturday 7th March
Saturday 18th April

10.00 — 11.30am

Help with Smartphones and Tablets

Refreshments provided

For more information, please contact Lucie Ferneyhough on 07929 717909 or lucie.ferneyhough@cheshireeast.gov.uk

Extracurricular Clubs - sign up on Arbor

Monday

- KS1 and KS2 Climbing Frame Fun 3pm to 4pm - pay per session now available on Arbor

Tuesday

- Chapel Group 8 - 8:30am - all welcome (entrance in the morning through corridor next to year 6)
- R - Y2 Multisports 3pm to 4pm - pay per session now available on Arbor

Wednesday

- KS1 and KS2 football 3pm to 4pm - pay per session now available on Arbor
- Mini Vinnies 3pm to 3:45pm
- Yr 6 Maths

Thursday

- Lunchtime Choir
- Y3 - 4 Football 3pm to 4pm - pay per session now available on Arbor

Friday

- Rock Steady Music - 8.30am to 10.30am (to book click [HERE](#)⁴)
- Homework Club (whilst in ASC)

After Easter

Monday - Cricket

Tuesday - Athletics

Wednesday - Football

Thursday - Rounders

All clubs are open to KS1 and KS2 pupils, these will be available to book via Arbor in due course.

Free Yoga classes. More information to follow.

In September, we will be offering archery to KS2 until half term which will take place in the hall.

School Nursery

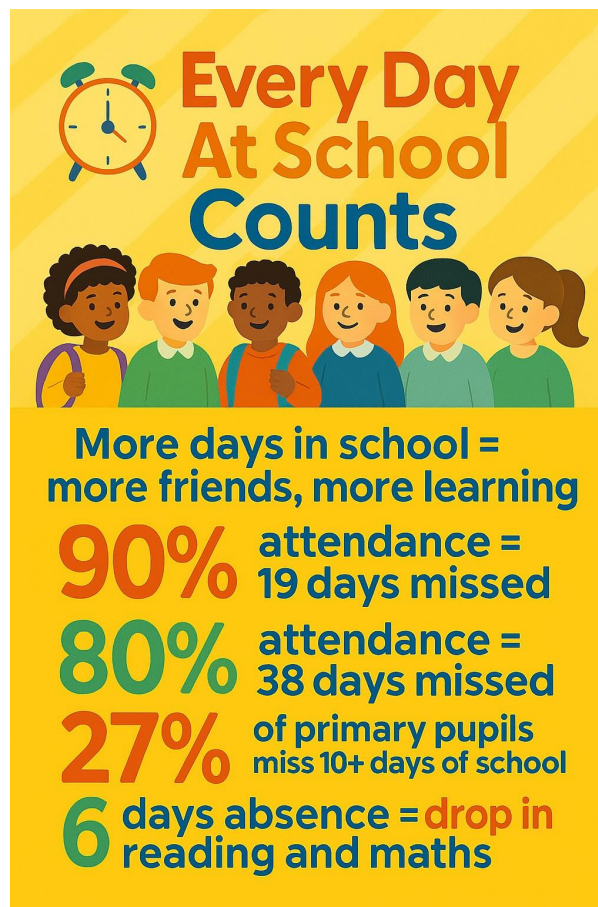


Please see our nursery page for more information on our school website - Nursery⁵

⁴<https://www.rocksteadymusicschool.com/>

⁵<https://www.stmarysmiddlewich.cheshire.sch.uk/page/?title=Nursery&pid=15>

Attendance



Absence

- Reporting an absence, please ring 01606 516 171 & select option 1, **by 9am latest each day**. State child's full name, class and reason for absence
- Please refer to the school's absence policy and Cheshire East Councils Penalty Notice via the school's website Here⁶
- useful information for parents - <https://www.nhs.uk/live-well/is-my-child-too-ill-for-school/>

Contacting the School Office

When contacting the school office for parent queries relating to clubs, medical appointments or school payment items, please contact the school office email which is: schooloffice@stmrc.uk⁷

⁶<https://www.stmarysmiddlewich.cheshire.sch.uk/page/?title=Policies&pid=30>

⁷<mailto:schooloffice@stmrc.uk>

If you have a general enquiry or a query regarding admissions or paper copies of any information published on our website, or assistance with Arbor please contact the School Office Manager at: admin@stmrc.uk⁸

To contact the headteacher Mrs Janet McKinlay, please email head@stmrc.uk⁹

To contact our school SENCO Miss Laura Dziamarski, please email ldziamarski@stmrc.uk¹⁰

If you have a query or concern regarding your child please speak with your child's class teacher in the first instance.

St Mary's Catholic Primary School

Manor Lane, Middlewich. CW10 9DH

01606 516 171

Office hours are Monday to Friday 8.00am to 4.00pm

Visit us on the web at <https://www.stmarysmiddlewich.cheshire.sch.uk/>

⁸<mailto:admin@stmrc.uk>

⁹<mailto:head@stmrc.uk>

¹⁰<mailto:ldziamarski@stmrc.uk>