

STMARY'S



www.stmarysmiddlewich.cheshire.sch.uk

T: 01606 516171 E: admin@stmrc.uk



Follow us on social media

Newsletter 15th May 2026



Dear Parents/carers,

Our Year 6 pupils will be heaving a sigh of relief now that their SATs tests are over. They did their very best and remained in good spirits all week. Well done, Year 6!

On another note, May is the month of Mary and you are invited to the May Procession which will be after Mass on Thursday, 21st May. Children will process around the field and will gather at the bottom of the field in front of our makeshift grotto. Please could all children bring in a small posy of white flowers on Thursday morning as per our custom. Here are a couple of photos from last year.

Finally, congratulations to the Year 3 children who made their First Holy Communion on 10th May and we look forward to congratulating those who are making theirs this Sunday. Children can wear their Holy Communion outfits for the Marian Procession on 21st. They will need a change of clothes. Pupils from year 4 who made theirs last year may also wear their outfits if they wish.





Pentecost Celebration

On Friday 22nd May, we will be celebrating Pentecost in school. Pentecost is often thought of as the Church's "Birthday"—a joyful moment when the Holy Spirit came to the disciples.

To help us mark this special day, we'd love the children to come dressed in warm, flame-coloured clothes such as **red**, **orange**, or **yellow**. These colours represent the flames of the Holy Spirit and will help create a bright, happy atmosphere. There's no need to buy anything new—anything you already have in these colours is perfect.

Thank you, as always, for your support. We're looking forward to a wonderful celebration together.

Year 6 SATs

With SATs now behind them, it's time to enjoy the final term in style – starting with proudly wearing their **leavers' hoodies!**

We think they've earned it! 😊

Well done, Year 6!



Our New Mission Statement

Staff, pupils and governors have worked on a new mission statement and we would like parents' input. Let us know what you think. The previous Mission Statement was very wordy and the children and adults had trouble remembering it. This is the final version - hopefully.

"As a school, we live, learn and love with God in our hearts."


Pupils from all classes are invited to design a background for our Mission over the Whit holiday.

Our Chicks Have Found Their Forever Home!

We're delighted to share that our chicks have now moved to their wonderful forever home at **Tree Tops Garden Centre**, Holmes Chapel Road, Knutsford, WA16 9RD.

We would like to say a huge thank you to Tree Tops Garden Centre for kindly adopting our chicks and providing them with such a caring new environment.

Families are very welcome to visit and see how they're settling in—what a lovely opportunity to catch up with our feathered friends!

Thank you again to Tree Tops for their generosity and support. 





Thank you to our PTA

 **PTA Rainbow Raffle – What a Fantastic Success!** 

We are delighted to share what a huge success our PTA Rainbow Raffle has been!

A big thank you to all our parents and carers for your generous and colourful donations — without your support, the raffle simply couldn't have gone ahead.

Thanks to your kindness, we raised a fantastic **£152.50!**

Congratulations to our lucky winners: **Darla, Emily, Savannah, Emmie, Isabelle, Daniel and Joseph** — well done! We hope you enjoyed all your wonderful goodies!

EYFS Resources

A big thank you to our wonderful PTA for their generous support in providing new EYFS resources. These additions make a real difference to our youngest learners, helping to create an engaging, stimulating, and nurturing environment where they can explore, play, and grow.

We are incredibly grateful for your continued support and commitment to enhancing the children's learning experiences. Your efforts are truly appreciated—thank you! 🙌



Thank you to our PTA for the wonderful benches in our Peace Garden. We're sure you'll agree it has created a calm and peaceful space for our pupils to enjoy.



PTA Summer Disco

Tickets for the upcoming PTA Summer Disco are available to purchase via the **Arbor School Shop**. Please note that children will not receive a physical ticket; instead, a register will be compiled and names will be checked off on the evening.

If any parents are able to support the PTA by volunteering some time on the night, it would be greatly appreciated. Please contact the school office if you are able to help. Thank you for your continued support.



Reception and KS1
Summer disco

Wednesday 20 May
17:00 - 18:00

Tickets cost £4 and include a snack
and drink
Please go to ARBOR to purchase
tickets
Sweets and toys for sale on the night
(cash only)



With thanks
+
St Mary's
Primary School
PTA



KS2
Summer disco

Wednesday 20 May
18:15 - 19:15

Tickets cost £4 and include a snack
and drink
Please go to ARBOR to purchase
tickets
Sweets and toys for sale on the night
(cash only)



With thanks
+
St Mary's
Primary School
PTA

Out of this World

🚀 Out of This World School Dinner! 🌍

On Thursday 21st May our kitchen is launching an exciting **“Out of This World”** themed menu, and we would love for all of our children to give it a try! With fun, space-inspired dishes, it’s the perfect opportunity to explore something new at lunchtime.

To make it even more exciting, we’ll be running a **“Lucky Plate”** competition for both KS1 and KS2. If your child is lucky enough to find a special sticker on their plate, they’ll win a prize! ★

We encourage all pupils to join in the fun, enjoy a delicious meal, and see if they can be one of our lucky winners.

Don’t miss out—come and taste something out of this world! 🌍 🚀





Sporting Success

We are delighted to congratulate Elijah on his fantastic achievement!

Recently, Elijah travelled to Minehead to take part in the *Leicester Tigers Challenge* rugby tour with Sandbach RUFC – an exciting opportunity to showcase his skills and team spirit.

Well done, Elijah – we look forward to hearing even more about your rugby adventures in the future! 🙌



Free Musical Theatre Classes

Carney Academy Cheshire, based in Sandbach, is offering free musical theatre classes all summer term long to new sign-ups. Classes open to different age groups from age 6 to 16.

To find out more, visit: <https://www.carneyacademy.co.uk/musicaltheatre>

To book a free taster class, visit: <https://www.carneyacademy.co.uk/taster-cheshire>

Community Notices

ATTENTION
YOU'RE INVITED TO OUR

SUMMER PRAISE
EVERYONE'S WELCOME

SUN 21 JUNE @ 10.30am

CHURCHES TOGETHER MIDDLEWICH

VENUE: ON THE SALINAE
MIDDLEWICH CW10 9DG

FESTIVAL CHOIR

CHURCHES TOGETHER INCLUDES:

- METHODIST CHURCH
- MID-CHESHIRE COMMUNITY CHURCH
- ST MARY'S CHURCH
- ST MICHAEL'S CHURCH
- UNITED REFORMED CHURCH


CHILDREN'S CHOIR
Upbeat songs & actions performed by pupils from the local schools

LIVELY CHURCH SERVICE

PLEASE STAY AFTERWARDS
ON THE SALINAE
FOR FOOD, MUSIC,
ACTIVITIES & CRAFT STALLS



The Wych Centre Presents



YOUTHIE

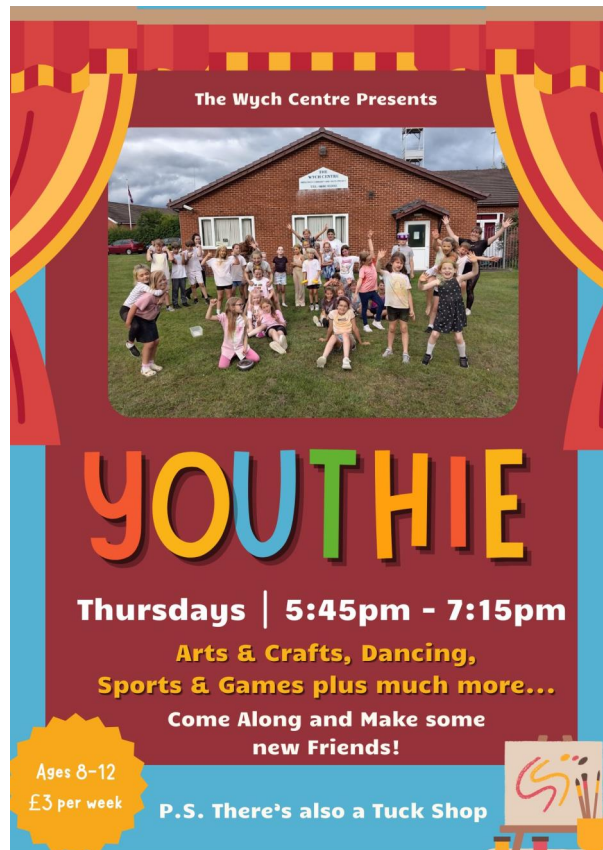
Thursdays | 5:45pm - 7:15pm

**Arts & Crafts, Dancing,
Sports & Games plus much more...**

**Come Along and Make some
new Friends!**

Ages 8-12
£3 per week

P.S. There's also a Tuck Shop





Wildcats Girls' Football.
Every Tuesday 6-7pm at Middlewich Town Football Club

Open to all girls aged 5 - 11, just turn up ready to play!
Gain football skills, meet new friends, build confidence.

If you've got any questions or want more information, contact:
Andy on 07738 203486 or Sarah on 07858 002672



**MIDDLEWICH
BRITISH LEGION**

**FAMILY
DISCO**

HOSTED BY
the one and only
Dolly Disco

PARTY GAMES!
FUN FOR ALL THE FAMILY
PRIZES TO BE WON!

RAFFLE! **RAFFLE!**
FANTASTIC PRIZES
TO BE WON!

**RAFFLE TO SUPPORT
MIDDLEWICH SCOUTS
ROOF FUND**

SATURDAY 23RD MAY

2PM TILL 5PM

ADMISSION: £2 PER CHILD
(UNDER 16) **ADULTS FREE**

ALL PROCEEDS FROM THE
RAFFLE WILL SUPPORT
MIDDLEWICH SCOUTS
ROOF FUND

MIDDLEWICH BRITISH LEGION LEWIN STREET MIDDLEWICH CW10 9EE



CYGNET COURSE

The Barnardo's Cygnet 6 week programme is widely recognised as an award winning parenting support programme. It is now available to parents/carers of children/young people ages 5-18years who have been diagnosed with Autism.

This course covers a variety of different topics such as thinking and sensory, social interaction and communication, understanding and supporting behaviour and analysing behaviour

This course is only available for parents and carers of children who have a diagnosis of Autism.
6 sessions, delivered over 6 weeks, for 2 hours per week at S4A.

Sessions held at Space4Autism.

For more information, email training@space4autism.org

Half-Term Activities

Fun Fest
HOLIDAY CLUB

May Half Term

Fun Fest Hartford Manor Fun Fest Great Budworth
26th May - 2nd June 26th - 29th May

Open 7:30am - 6pm for children aged 3-12
Bookings go live Monday 20th April
www.fun-fest.co.uk

Coming this Summer
Fun Fest Rudheath - Opening 27th July
Summer bookings for all clubs open 3rd June!



Explore Nature, Art, Science and Technology across West Cheshire Museums at **Museum Explorers club!**

Come and make some exciting discoveries with us this Spring!

Under the Sea
Wednesday 27th May
11am-12pm & 12pm-1pm



Weaver Hall
Museum & Workhouse

Medieval Mayhem
Thursday 28th May
11am-12pm & 12pm-1pm



Grosvenor Museum

Light, Camera, Action!
Friday 29th May
11am-12pm & 12pm-1pm



Lion Salt Works

Booking necessary, £5 per session. To book, pop in to see us or call:

Weaver Hall Museum: 01606 271646

Lion Salt Works: 01606 275066

Grosvenor Museum: 01244 972197

Free School Meal Eligibility

Your child may be entitled to receive free school meals if you are entitled to receive one of the following:

- Income Support
- Income-based Jobseeker's Allowance
- Income-related Employment and Support Allowance
- Support under Part VI of the Immigration and Asylum Act 1999
- The Guarantee element of State Pension Credit
- Child Tax Credit, provided you are not entitled to Working Tax Credit and have an annual income that does not exceed £16,190.
- Universal Credit (Provided you have an annual net earned income of no more than £7,400)

Please go to <https://schoolsparentportal.cheshireeast.gov.uk/web/portal/pages/parents/travel-and-free-school-meals> where you can apply on-line.

It is really important that you complete the on-line form to ensure your child is recorded as eligible for Free School Meals and to help make sure that the school is funded.

If you cannot apply on-line, you can telephone Free School Meals on 0300 123 7039, but this is only if you do not have access to the internet.

PACKED LUNCHES

The DfE has announced reforms to the requirements for School Food Regulations 2014 (known as the School Food Standards) which provide the legislative framework to ensure schools in England provide children with healthy food and drink, and to make sure that children have the energy and nutrition they need across the school day. Under the reforms, deep-fried and high-sugar items like ice cream are set to be removed from school menus. The changes reflect growing concern within government about children's diets and their long-term impact on public health. Therefore, we ask that packed lunches **do not include**:

- Fizzy or energy drinks
- Sweets or chocolate bars
- Crisps more than once per week
- Nut-containing products (due to allergy risk)

Mental Health Toolkit

Cheshire East partners have created a practical wellbeing reference tool to help parents strengthen mental health support for their children - using simple, sustainable strategies paired with clear local support pathways.

Please use the link below.

<https://live-chesheast.cloud.contensis.com/pdf/schools/bulletins/documents-for-bulletins-2026/april/parent-carer-version-mental-health-toolkit.pdf>

Affordable Counselling Flyer



Affordable **counselling** **delivered remotely**

Improving accessibility to mental health support across the UK.

We understand that cost can be a barrier to seeking help, which is why we're making counselling more accessible by offering sessions at an affordable rate. Our goal is to ensure that anyone who needs support can find it.

Available at **£25** per session



Scan here to self refer

or email support@healthboxcic.com



All profits **re-invested** **into our community** **wellbeing services**

By accessing this service, you're not only supporting your own wellbeing, you're also helping us to support others in the community.

- ☑ Available to anyone aged 18+ living in the UK
- ☑ Sessions delivered by phone/secure video call
- ☑ No need to travel or attend in person
- ☑ Flexible around work, childcare, etc
- ☑ Affordable pricing at £25 per session

Take the **first step** towards getting the support you need today.

HEALTHBOX
COMMUNITY WELLBEING SERVICES

Crisis and Resilience Fund

The UK Government, through the Department of Work and Pensions, has introduced the Crisis and Resilience Fund (CRF) for local authorities for the period from April 2026 to March 2029.

The CRF is intended to provide timely and effective support to residents who experience a financial shock and find themselves in financial crisis. CRF also aims to strengthen long-term financial resilience and reduce the need for crisis support in the future.

For more information, click on the link below:

https://www.cheshireeast.gov.uk/benefits_housing_council_tax/crisis-and-resilience-fund/crisis-and-resilience-fund.aspx

If you require support, please contact the school office via email schooloffice@stmrc.uk¹

Middlewich & District Foodbank



**We're
here
to
help.**

Middlewich & District
Foodbank is here to support
your school community.



EMERGENCY FOOD

Parcels are available with essentials like milk, tinned foods, cereals, pasta, rice, biscuits.

REFERRAL

Your school can facilitate a confidential referral to ensure you receive the help you need.

NEXT STEP

Get in touch with the Food Bank via the details below, through your school office, doctor's surgery or social worker.

Telephone

0771 227 9949

¹<mailto:schooloffice@stmrc.uk>

Email info@middlewichdistrict.foodbank.org.uk

School Uniform

We have been informed by **Badged** that they will be **relocating from 1st June**.

We would also like to take this opportunity to remind parents of our school uniform expectations and approved suppliers, view policy [HERE](#)².

Uniform can be purchased from the following:

- **Triffic Togs**
- **Badged**
- **Sam Dales**

Thank you for your continued support in ensuring children attend school in the correct uniform.



Extracurricular Clubs - sign up on Arbor

Monday

- KS1 and KS2 Cricket 3pm to 4pm - pay per session now available on Arbor

Tuesday

²<https://www.stmarysmiddlewich.cheshire.sch.uk/page/?title=Policies&pid=30>

- Chapel Group 8 - 8:30am - all welcome (entrance in the morning through Chapel corridor next to year 6)
- KS1 and KS2 Athletics 3pm to 4pm - pay per session now available on Arbor

Wednesday

- KS1 and KS2 Football 3pm to 4pm - pay per session now available on Arbor
- Mini Vinnies 3pm to 3:45pm
- Yr 6 Maths Club

Thursday

- Lunchtime Choir
- KS1 and KS2 Rounders 3pm to 4pm - pay per session now available on Arbor

Friday

- Rock Steady Music - 8.30am to 10.30am (to book click [HERE](#)³)
- Homework Club (whilst in ASC)

ALL SPORTS CLUBS CAN BE BOOKED UNTIL 11AM ON THE DAY *SUBJECT TO AVAILABILITY*

School Nursery

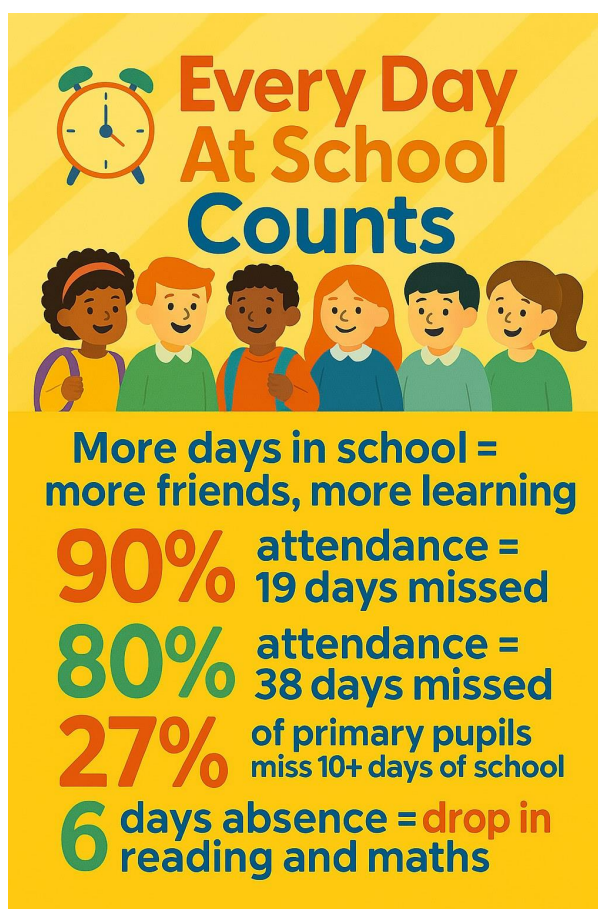


Please see our nursery page for more information on our school website - Nursery⁴

³<https://www.rocksteadymusicschool.com/>

⁴<https://www.stmarysmiddlewich.cheshire.sch.uk/page/?title=Nursery&pid=15>

Attendance



Absence

- Reporting an absence, please ring 01606 516 171 & select option 1, **by 9am latest each day**. State child's full name, class and reason for absence
- useful information for parents - <https://www.nhs.uk/live-well/is-my-child-too-ill-for-school/>

The Importance of Good Attendance

Regular school attendance is vital to ensure children make the most of their learning opportunities, build strong friendships and develop positive routines.

Any leave requested during term time must be made in advance by completing a **Request for Leave** form. Please note that leave taken during term time may result in a **fine being issued by the Local Authority**, in line with current regulations. Please refer to chart below for details of the PN process including fines and timelines.

For further information, please refer to the school's **Absence Policy** and **Cheshire East Council's Penalty Notice guidance**, which are available via the school website [HERE](#)⁵.

⁵<https://www.stmarysmiddlewich.cheshire.sch.uk/page/?title=Policies&pid=30>

Thank you for your continued support in promoting excellent attendance.

PENALTY NOTICE AND PROSECUTION

Penalty Notices may be issued for

Term time leave: Penalty Notice fines may be issued for term time leave of 5 or more days (10 sessions) in a 10-week period.

10 Sessions of Unauthorised absence in a rolling 10 week period: A Penalty Notices may be considered when there have been 10 sessions of unauthorised absence in a 10-week period.

However, school retain the discretion to request a Penalty Notice before the threshold is met. For example, where parents/carers are deliberately avoiding the national threshold by taking several term time holidays below the threshold.

Per Parent/Per Child

Penalty Notice fines will continue to be issued per parent/carer per child. For example: 3 siblings absent for term time leave, would result in each parent/carer receiving 3 separate fines.

First Offence

The first time a Penalty Notice is issued for term time leave or irregular school attendance the fine will be charged at:

£160 per parent/carer, per child if paid within 28 days of the issue, reducing to £80 per parent/carer, per child if paid within 21 days.

(Unpaid penalty notices may result in a parental prosecution)

Second Offence

Where it is deemed appropriate to issue a second penalty notice to the same parent/carer for the same pupil within 3 years of the first penalty notice, for either term time leave or irregular attendance the second penalty notice will be charged at:

£160 if paid within 28 days. (Unpaid penalty notices may result in a parental prosecution)

Third Offence

On the third time that an offence is committed within 3 years of the first penalty notice for either a term time leave or irregular attendance a penalty notice will not be issued.

The Local Authority will decide on appropriate next steps which may include:

*Prosecution under s444 (1) or (1a) of the Education Act 1996 which may result in a fine of upto £1000 or £2500 respectively.

*Referral to other agencies.

OFFICIAL

Dates for the diary 25-26

Tuesday 19 th May	African Dance Workshop, during the school day
Wednesday 20 th May	PTA Summer Disco (Purchase Tickets via Arbor) Reception and KS1 17:00 – 18:00 KS2 18:15 – 19:15
Friday 22 nd May	Pentecost Celebration – Wear Red, Orange or Yellow
Friday 22nd May	School closes for Whit at 15:00
Monday 8th June	School opens for the Summer Term
Thursday 21 st May	May Procession, during the school day. <u>Please bring in a small posy of white flowers.</u>
Tuesday 9 th June	Reception New Intake Meeting 6pm in the hall
Wednesday 10 th June	Quad Kids Athletics Y5 and 6 St Nicholas 3:45 – 5:15pm
Wednesday 17 th June	Y5 Activities' Day at St Nicholas High School
Thursday 18 th and Friday 19 th June	Y6 Transition Days at Holmes Chapel Comprehensive School
Friday 19 th June	Y3 – Trentham Gardens Trip
Wednesday 24 th June	KS2 Town Sports 3:30 – 5:30pm MPS
Thursday 25 th and Friday 26 th June	Y6 Transition Days at Sandbach Boys School
Wednesday 1 st and Thursday 2 nd July	Y6 Transition Days at Middlewich High School
Monday 6 th July	School Sports Day
Tuesday 7 th & Wednesday 8 th July	Y6 Transition Days at St Nicholas High School
Friday 3 rd July	Summer fair 3pm onwards (CHANGE OF DATE)
Tuesday 14 th July	Year 6 production 6pm (advance notice)
Thursday 16 th July	Leavers Mass in the morning
Friday 17th July	School closes for Summer at 13:30

Contacting the School Office

When contacting the school office for parent queries relating to clubs, medical appointments or school payment items, please contact the school office email which is: schooloffice@stmrc.uk⁶

If you have a general enquiry or a query regarding admissions or paper copies of any information published on our website, or assistance with Arbor please contact the School Office Manager at: admin@stmrc.uk⁷

To contact the headteacher Mrs Janet McKinlay, please email head@stmrc.uk⁸

To contact our school SENCO Miss Laura Dziamarski, please email ldziamarski@stmrc.uk⁹

⁶<mailto:schooloffice@stmrc.uk>

⁷<mailto:admin@stmrc.uk>

⁸<mailto:head@stmrc.uk>

If you have a query or concern regarding your child please speak with your child's class teacher in the first instance.

St Mary's Catholic Primary School

Manor Lane, Middlewich. CW10 9DH

01606 516 171

Office hours are Monday to Friday 8.00am to 4.00pm

Visit us on the web at <https://www.stmarysmiddlewich.cheshire.sch.uk/>