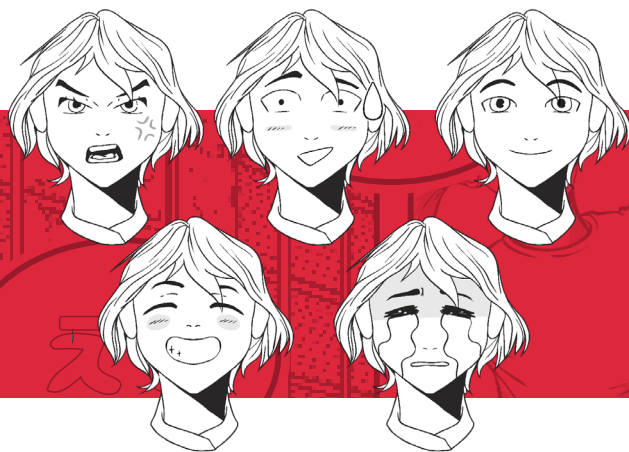


# Japanese Manga



## What Is Manga?

Manga is a type of comic from Japan. Unlike the colourful comic book styles from the USA and Europe, Japanese manga is almost always black and white. Like other Japanese texts, manga is read from right to left.

Sometimes, people confuse manga and **anime** but they are two different things. Manga generally means books and comics. The term anime describes films and television series. However, manga and anime are closely linked. Popular manga titles are often made into anime series.

Manga is written by artists called **mangaka**. Some mangaka attend special manga schools and others learn their skills by working with a trained mangaka.

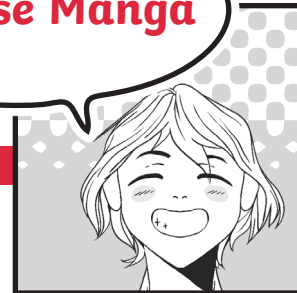
## History of Manga

The term manga was first used in 1798 to describe a picture book by Santō Kyōden called 'Shiji no Yukika', which means the four seasons. In 1814, a famous Japanese artist named Hokusai used the term manga for one of his sketchbooks.



His collection of sketches called 'Hokusai Manga' included pictures of daily life and drawings inspired by Japanese **mythology**.

## Japanese Manga



### Different Types of Manga

There is a huge range of different types of manga.



Shonen is targeted at boys and is usually about an adventure.



Shojo is written for girls and is often centred around friendships.



Kodomo is designed for toddlers and very young children.

Although some manga is targeted at certain audiences, anyone can enjoy both shonen and shojo.

## Glossary

**anime:** A style of Japanese film and television animation.

**mangaka:** Someone who creates manga.

**mythology:** A set of stories or beliefs belonging to a particular culture.

### Getting into Manga

Manga is a fantastic way to expand the variety of your reading material. Your local library is a perfect place to start if you are keen to learn more about manga or want to start reading some manga for yourself. Sometimes, they will have a manga area and a librarian can help you pick a good title to start with. Most bookshops also have a comic section that will have a selection of manga. With so many titles to choose from, you should always ask an adult to help you choose a suitable series.



# Questions

1. Where is manga from? Tick one.

- ☐ Europe  
☐ Japan  
☐ anime  
☐ USA

2. When was the term manga first used? Tick one.

- ☐ 1798  
☐ 1814  
☐ 1841  
☐ 1789

3. Draw **four** lines and match each word to its definition.

mangaka

shojo

kodomo

shonen

manga about friendships

manga for toddlers

manga about adventures

someone who creates manga

4. What does 'Shiji no Yukikai' mean? Tick one.

- ☐ manga for toddlers  
☐ colourful comics  
☐ the four seasons  
☐ Japanese mythology

5. Look at the section called **Different Types of Manga**.

Find and copy one word which means the same as 'aimed'.

---

6. Fill in the missing words.

Manga is a fantastic way to \_\_\_\_\_ the variety of your \_\_\_\_\_ material.

7. Explain the similarities and differences between manga and anime.

---



---



---

# Answers

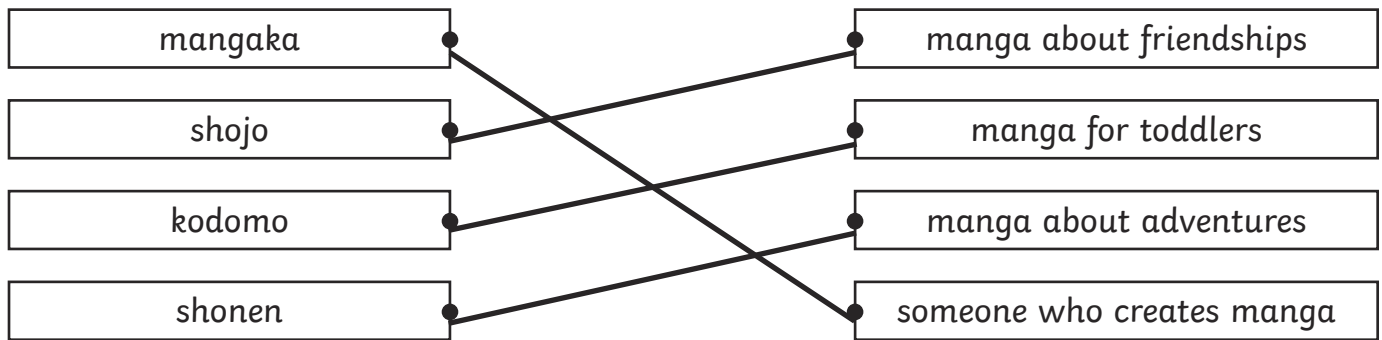
1. Where is manga from? Tick one.

- ☐ Europe  
☒ **Japan**  
☐ anime  
☐ USA

2. When was the term manga first used? Tick one.

- ☒ **1798**  
☐ 1814  
☐ 1841  
☐ 1789

3. Draw **four** lines and match each word to its definition.



4. What does 'Shiji no Yukikai' mean? Tick one.

- ☐ manga for toddlers  
☐ colourful comics  
☒ **the four seasons**  
☐ Japanese mythology

5. Look at the section called **Different Types of Manga**.

Find and copy one word which means the same as 'aimed'.

**targeted**

6. Fill in the missing words.

Manga is a fantastic way to **expand** the variety of your **reading** material.

7. Explain the similarities and differences between manga and anime.

**Pupils' own responses, such as: Manga and anime are similar because they both come from Japan and they have a similar style. However, they are different because manga is printed and anime refers to film and television.**

## What Is Manga?

Manga is the name of a type of **graphic novel** and comic from Japan. Unlike the colourful comic book styles from the USA and Europe, Japanese manga is almost always published in black and white. Like other Japanese texts, manga is read from right to left.



Sometimes, people confuse manga and anime but they are actually two different things. Manga generally means printed text, such as books and comics. The term anime describes films and television series. However, manga and anime are closely linked. Popular manga titles are often made into anime series.

Manga is written by artists called **mangaka**. Some mangaka attend special manga schools and others learn their skills by working with a trained mangaka.

## Different Types of Manga

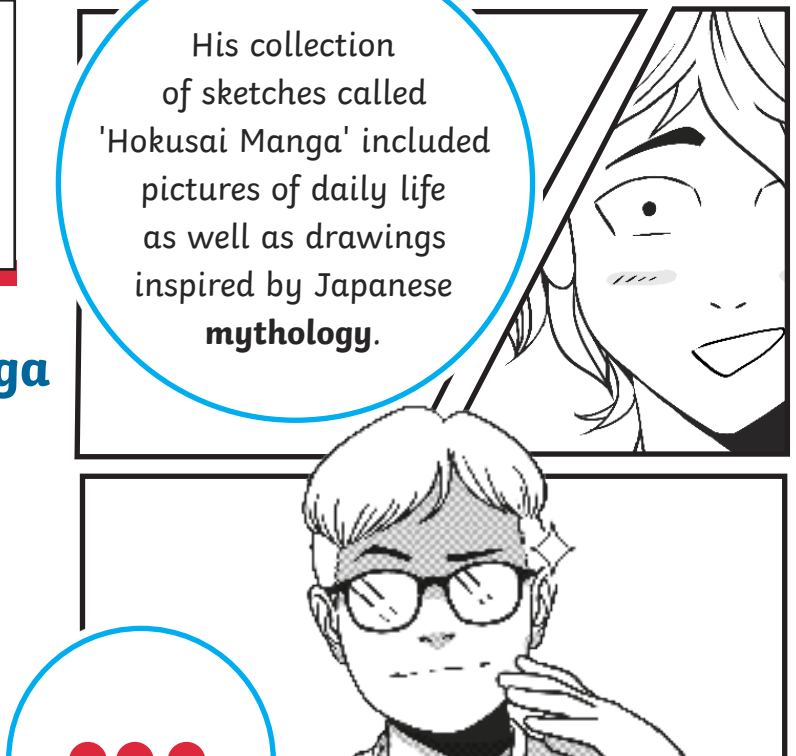
There is a huge range of different types of manga. Shonen is targeted at boys and is usually about an adventure, shojo is written for girls and is often centred around friendships and kodomo is designed for toddlers and very young children.



## History of Manga

The term manga was first used in 1798 to describe a picture book by Santō Kyōden called 'Shiji no Yukikai', which means the four seasons. In 1814, a famous Japanese artist named Hokusai used the term manga for his sketchbooks.

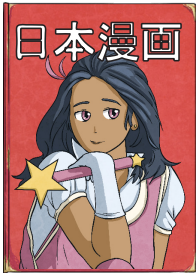
His collection of sketches called 'Hokusai Manga' included pictures of daily life as well as drawings inspired by Japanese **mythology**.





## Japanese Manga (漫画)

Although the traditional types have these audiences, anyone can enjoy both shonen and shojo.



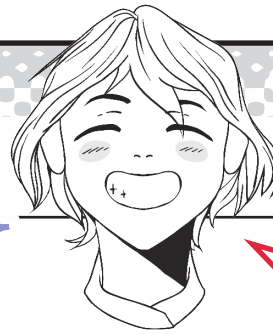
Some of the most popular manga continue for many years. The 'Glass Mask' by Suzue Miuchi was one of the longest-running shojo manga. It was published for 44 years from January 1976 until 2020.



'KochiKame' by Osamu Akimoto is a popular shonen manga series with over 1960 chapters.

## History of Manga

After the end of the Second World War, Japan was **occupied** by the United States. The Americans brought their own comics to Japan and they had a huge impact on the development of manga. The mangaka added an American flair to the traditional Japanese illustrations and modern-day manga was born.



## Getting into Manga

Manga is a fantastic way to expand the variety of your reading material. Your local library is a perfect place to start if you are keen to learn more about manga or want to start reading some manga for yourself. Sometimes, they will have a manga area and a librarian can help you pick a good title to start with.

Most bookshops also have a comic section that will have a selection of manga. With so many titles to choose from, you should always ask an adult to help you choose a suitable series.

## Glossary



**graphic novel:** A book written in comic-strip form.

**mangaka:** Someone who creates manga.

**mythology:** A set of stories of beliefs that belong to a particular culture.

**occupied:** To be taken control of due to a war or conflict.



# Questions

1. What are manga creators called? Tick one.

- ☐ kodomo  
☐ shojo  
☐ mangaka  
☐ shonen

2. Number the events from 1-4 to show the order that they happened.

- ☐ Hokusai published 'Hokusai Manga'.  
☐ The term manga was used for the first time.  
☐ The Second World War ended.  
☐ The final chapter of 'The Glass Mask' was published.

3. Which manga series had over 1960 chapters? Tick one.

- ☐ 'Shiki no Yukkai'  
☐ 'The Glass Mask'  
☐ 'KochiKame'  
☐ 'Kodomo'

4. Draw **four** lines and match each word to its definition.

mangaka	•
shojo	•
kodomo	•
shonen	•

•	manga about friendships
•	manga for toddlers
•	manga about adventures
•	someone who creates manga

5. Look at the section called **History of Manga**.  
Find and copy one word which means 'folk tales'.

---

6. Fill in the missing words.

Although the \_\_\_\_\_ types have these \_\_\_\_\_, anyone can enjoy both shonen and shojo.

7. Explain how the end of the Second World War affected manga.

---

---

---

8. Look at the section called **Different Types of Manga**.

Summarise the key points in 30 words or fewer.

---

---

---



# Answers

1. What are manga creators called? Tick one.

- ☐ kodomo  
☐ shojo  
☒ **mangaka**  
☐ shonen

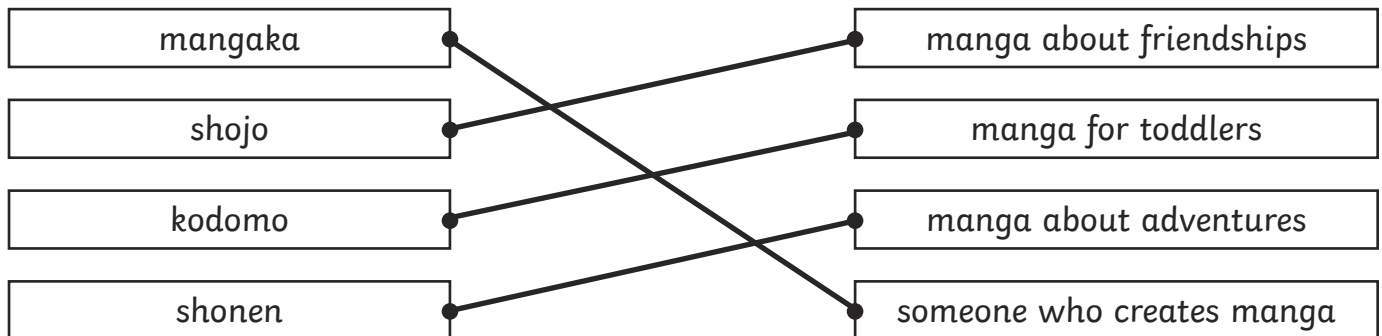
2. Number the events from 1-4 to show the order that they happened.

- 2** Hokusai published 'Hokusai Manga'.  
**1** The term manga was used for the first time.  
**3** The Second World War ended.  
**4** The final chapter of 'The Glass Mask' was published.

3. Which manga series had over 1960 chapters? Tick one.

- ☐ 'Shiki no Yukkai'  
☐ 'The Glass Mask'  
☒ **'KochiKame'**  
☐ 'Kodomo'

4. Draw **four** lines and match each word to its definition.



5. Look at the section called **History of Manga**.

Find and copy one word which means 'folk tales'.

**mythology**

6. Fill in the missing words.

Although the **traditional** types have these **audiences**, anyone can enjoy both shonen and shojo.

7. Explain how the end of the Second World War affected manga.

**Pupils' own responses, such as: The end of the Second World War affected manga by bringing an American influence to the world of Japanese comics. Japanese comic writers were influenced by American comics.**

8. Look at the section called **Different Types of Manga**.

Summarise the key points in 30 words or fewer.

**Pupils' own responses, such as: There are lots of types of manga. Shonen is about adventures. Shojo is about friendships and kodomo is for toddlers.**



## A Short History of Manga

The term manga was first used by Santō Kyōden in 1798 to describe a picture book called 'Shiji no Yukikai', which means four seasons. Some years later, the term manga was used by the famous artist Hokusai, who was best known for **The Great Wave off Kanagawa**. He used the term manga for his sketchbooks in 1814.



His collection of illustrations called 'Hokusai Manga' included scenes of daily life as well as drawings inspired by Japanese **mythology**.

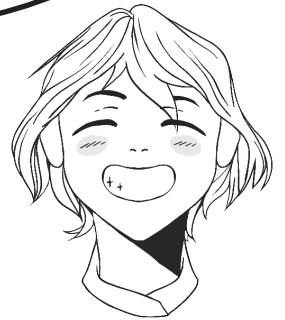
# Japanese Manga

What

Is

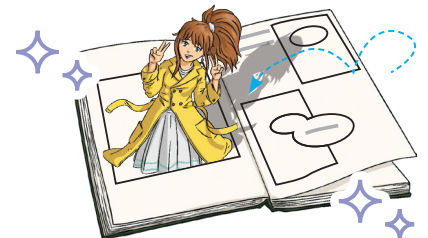
Manga?

Manga is the name of a group of **graphic novels** and comics originally published in Japan. Unlike other colourful comic book styles from the USA and Europe, Japanese manga is almost always published in black and white.



Full-colour prints are traditionally only used for special releases. Similar to other Japanese texts, manga is read from right to left.

Sometimes, people confuse manga and anime but they are actually two different things. Manga generally refers to printed



narratives, e.g. books and comics. The term anime describes films and television series. However, manga and anime are closely related; popular manga titles are often made into anime.

Manga is written by expert artists called **mangaka**. Some mangaka attend special manga schools and others learn their skills by working with an experienced mangaka. Naoko Takeuchi is a popular and successful mangaka who famously began her career by winning a manga writing competition.

## Different Types of Manga



There is a huge range of different types of manga; the genres are designed for a variety of audiences.



Shonen is targeted at boys and is usually about an adventure.



Shojo is written for girls and is often centred around friendships.



Kodomo is designed for toddlers and very young children.

Although the traditional varieties have these genders connected to them, anyone can enjoy both shonen and shojo.

Some of the most popular manga continue for many years. 'The Glass Mask' by Suzue Miuchi was one of the longest-running shojo manga and was published for 44 years from January 1976 until 2020. An astonishingly popular concluded shonen manga series is 'KochiKame' by Osamu Akimoto. It has over 1960 chapters.

## A Short History of Manga

Following the ending of the Second World War, Japan was **occupied** by the United States. The Americans brought their own comics to Japan and their influence had a huge impact on the development of manga. The mangaka added an American flair to the traditional Japanese illustrations and modern-day manga was born.

## Getting into Manga

Manga is a fantastic way to expand the variety of your reading material. Your local library is a perfect place to start if you are keen to learn more about manga or want to start reading some manga for yourself.

Sometimes, they will have a manga area and a librarian can help you pick a good title to start with. Most bookshops also have a comic section that will have a selection of manga.

With so many titles to choose from, you should always ask an adult to help you choose a suitable series.

## Glossary

**graphic novels:** A book written in comic-strip form.

**mangaka:** Someone who creates manga.

**The Great Wave off Kanagawa:** A famous piece of art by the Japanese artist Hokusai showing a large wave.

**mythology:** A set of stories of beliefs that belong to a particular culture.

**occupied:** To be taken control of due to a war or conflict.

# Questions

1. Where is manga from? Tick one.

- ☐ China  
☐ Japan  
☐ USA  
☐ Europe

2. Draw **four** lines and match each word to its definition.

mangaka	manga about friendships
shojo	manga for toddlers
kodomo	manga about adventures
shonen	someone who creates manga

3. Fill in the missing words.

Unlike other \_\_\_\_\_ comic book styles from the USA and Europe, Japanese manga is almost always \_\_\_\_\_ in black and white.

4. Look at the section called **A Short History of Manga**.

Find and copy one word which means 'drawings'.

---

5. What is the name of the longest-running shojo manga series?

---

6. How did the end of the Second World War impact the development of manga?

---



---



---



7. Explain the **three** different types of manga that the text discusses.

---

---

---

8. Look at the section called **What Is Manga?**  
Summarise the key information in 30 words or fewer.

---

---

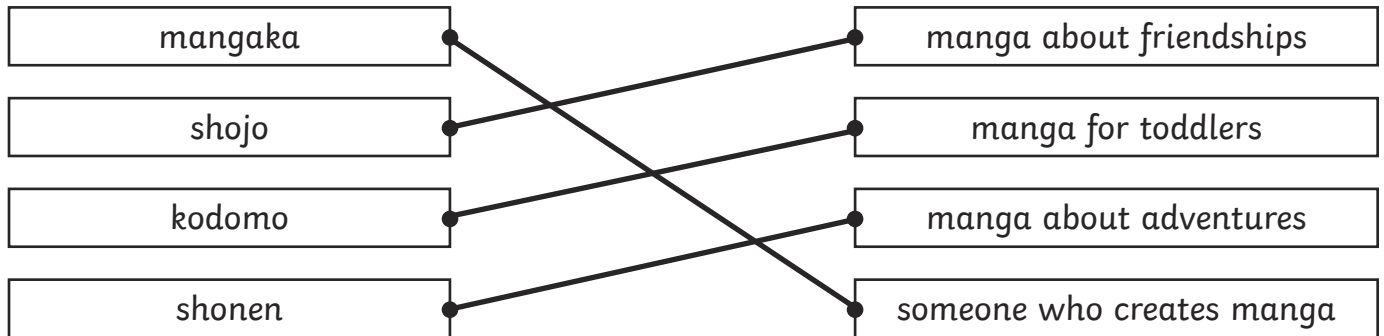
---

# Answers

1. Where is manga from? Tick one.

- ☐ China  
☒ **Japan**  
☐ USA  
☐ Europe

2. Draw **four** lines and match each word to its definition.



3. Fill in the missing words.

Unlike other **colourful** comic book styles from the USA and Europe, Japanese manga is almost always **published** in black and white.

4. Look at the section called **A Short History of Manga**.

Find and copy one word which means 'drawings'.

**illustrations**

5. What is the name of the longest-running shojo manga series?

**The longest-running shojo manga series is called 'The Glass Mask'.**

6. How did the end of the Second World War impact the development of manga?

**Pupils' own responses, such as: The end of the Second World War affected the development of manga because there were lots of Americans in Japan after the war and their comics influenced the mangaka and gave them new ideas to use in their creations.**

7. Explain the **three** different types of manga that the text discusses.

**Pupils' own responses, such as: Shonen manga is about adventures and is traditionally aimed at boys, Shojo manga is about friendships and is generally written for girls and kodomo manga is for younger readers and toddlers. Although these are the traditional audiences, anyone can equally enjoy both shonen and shojo.**

8. Look at the section called **What Is Manga?**

Summarise the key information in 30 words or fewer.

**Pupils' own responses, such as: Manga is a genre of comics from Japan. They are closely linked to anime but the two things are not the same. Manga is written by talented artists called mangaka.**