

Epiphany

Epiphany is a Christian feast day. It usually takes place in churches on 6th January. Epiphany comes from a Greek word meaning 'appearance'. It is a celebration of the baby Jesus being seen by the visitors who had travelled a long way to get to him.

The Visitors

Some men were looking at the stars. One night, they saw a new star. The men were very clever and understood the religious writings that had been written many years before. The writings said that one day there would be a great star and it would mean that a new king had been born. The new king would be the king to save all people. The men packed up their things and followed the star. These men are known as the Wise Men.

Did You Know...?

The Wise Men lived in the east so they may have been from Persia, which is now called Iran.

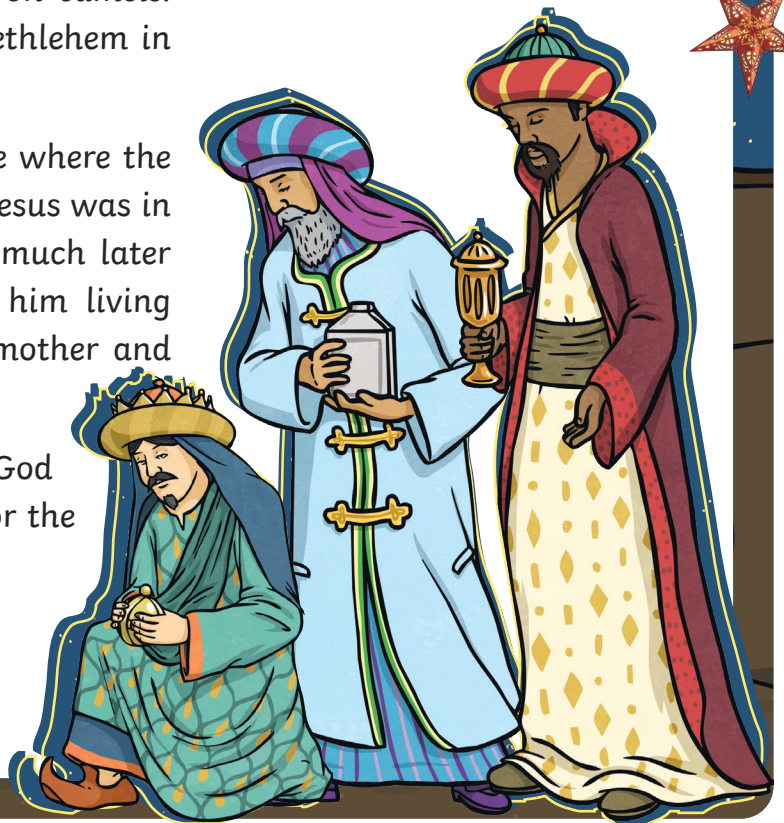
The Bible doesn't say how many Wise Men there were. People believe that there must have been three men because there were three gifts.

The Journey

The journey would have been very long and tiring. The men probably travelled on camels. The star led them to the town of Bethlehem in Israel.

The star came to rest over the place where the baby Jesus was. It is thought that Jesus was in a stable but the Wise Men arrived much later after Jesus was born. They found him living in a house in Bethlehem with his mother and father.

Jesus was believed to be the son of God so the Wise Men took special gifts for the new baby to celebrate his birth.



Gold

A precious metal and a sign of wealth. The Wise Men gave it as a sign of their love for Jesus as the King of kings.



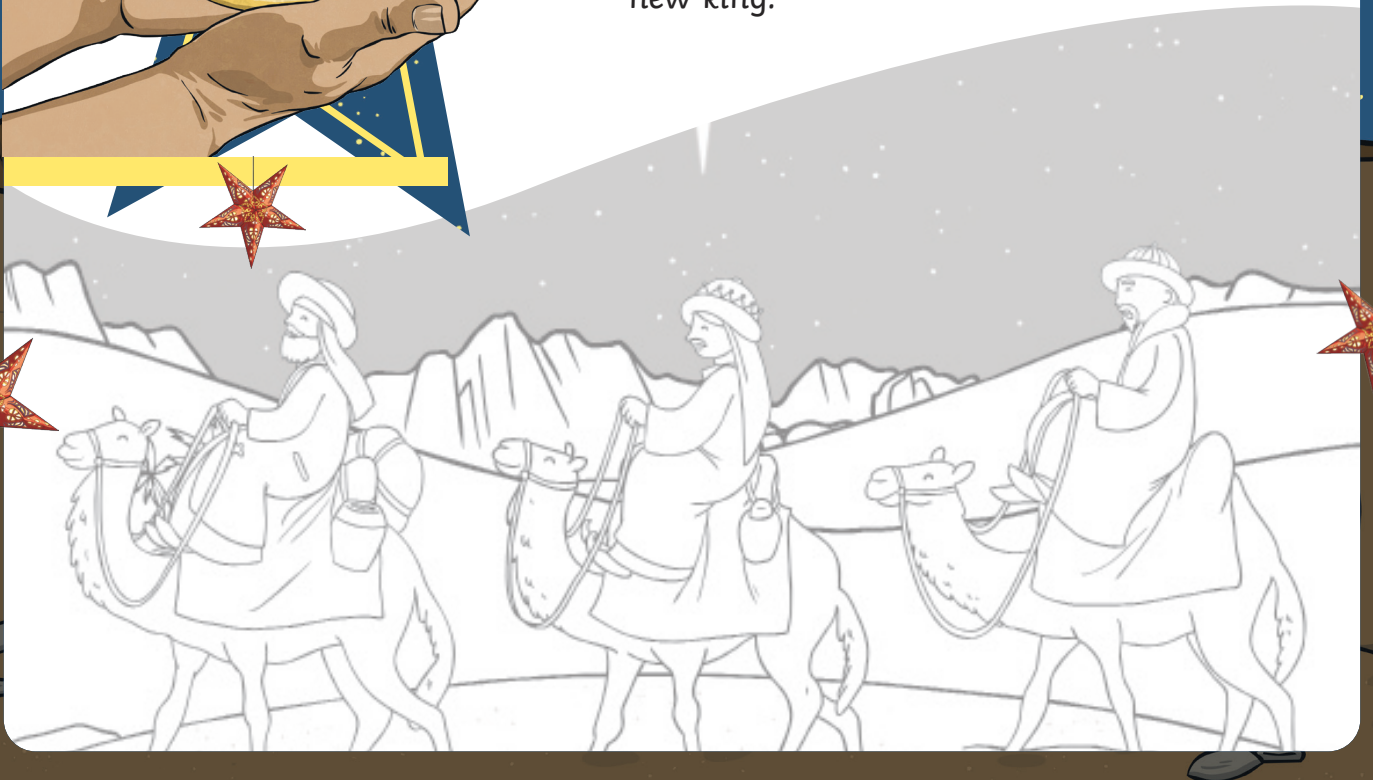
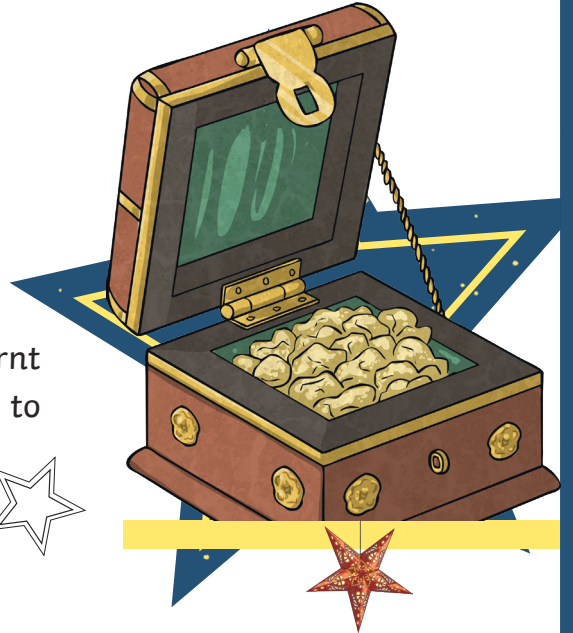
Frankincense

Gum from an African tree which could be burnt as incense. The Wise Men gave Frankincense to Jesus to show they had faith in him.



Myrrh

This is from the sap of another African tree. This gift was given to show Jesus that the Wise Men were happy to obey him as the new king.



Questions

1. Where does the word 'Epiphany' come from?

2. What gifts did the Wise Men bring to Jesus? Tick **two**.

- ☐ gold
- ☐ silver
- ☐ myrrh
- ☐ bronze

3. Fill in the missing word.

The Wise Men lived in the _____ so they may have been from Persia, which is now called Iran.

4. Number the sentences from 1-4 to show the order that they appear in the text.

- ☐ The journey would have been long and tiring.
- ☐ It usually takes place in churches on 6th January.
- ☐ People believe that there may have been three men because there were three gifts.
- ☐ The star came to rest over the place where baby Jesus was.

5. Underline one word in the quotation below that shows that the Wise Men trusted Jesus and believed in him.

The Wise Men gave Frankincense to Jesus to show they had faith in him.

6. The Wise Men gave Jesus gold. What was this a sign of? Tick one.

- ☐ It was a sign of their faith.
- ☐ It was a sign of their love.
- ☐ It was a sign of their loyalty.
- ☐ It was a sign of their obedience.

7. Which of the three gifts do you think is the most important? Explain your answer.

Answers

1. Where does the word 'Epiphany' come from?

The word Epiphany comes from a Greek word meaning 'appearance'.

2. What gifts did the Wise Men bring to Jesus? Tick **two**.

- ☒ **gold**
- ☐ silver
- ☒ **myrrh**
- ☐ bronze

3. Fill in the missing word.

The Wise Men lived in the **east** so they may have been from Persia, which is now called Iran.

4. Number the sentences from 1 - 4 to show the order that they appear in the text.

- 3** The journey would have been long and tiring.
- 1** It usually takes place in churches on 6th January.
- 2** People believe that there may have been three men because there were three gifts.
- 4** The star came to rest over the place where baby Jesus was.

5. Underline one word in the quotation below that shows that the wise men trusted Jesus and believed in him.

The Wise Men gave Frankincense to Jesus to show they had faith in him.

Award 1 mark for:

- **faith**

6. The Wise Men gave Jesus gold. What was this a sign of? Tick one.

- ☐ It was a sign of their faith.
- ☒ **It was a sign of their love.**
- ☐ It was a sign of their loyalty.
- ☐ It was a sign of their obedience.

7. Which of the three gifts do you think is the most important? Explain your answer.

Pupils' own responses, such as: I think that gold is the most important gift because it showed that the Wise Men loved Jesus.

Epiphany

Epiphany is a Christian feast day. It usually takes place in churches on 6th January and marks the end of the 12 days of Christmas. Epiphany comes from a Greek word meaning 'appearance.' It is a celebration of the baby Jesus being seen by the visitors who had travelled a long way to get to him.

The Visitors

Some men were studying the stars and constellations with their telescopes. One night, they saw a star which looked new and interesting. The men were very clever and understood the religious writings and books that had been written many years before. The writings predicted that one day there would be a great star and it would mean that a new king had been born. The new king would be the king to save all people. The men were excited to see it. They packed up their belongings and followed the star. These men are known as the Wise Men.

The Wise Men lived in the East so they were possibly from Persia, which is now called Iran.

The Bible never mentions how many Wise Men there were. People believe that there may have been three men because there were three gifts.

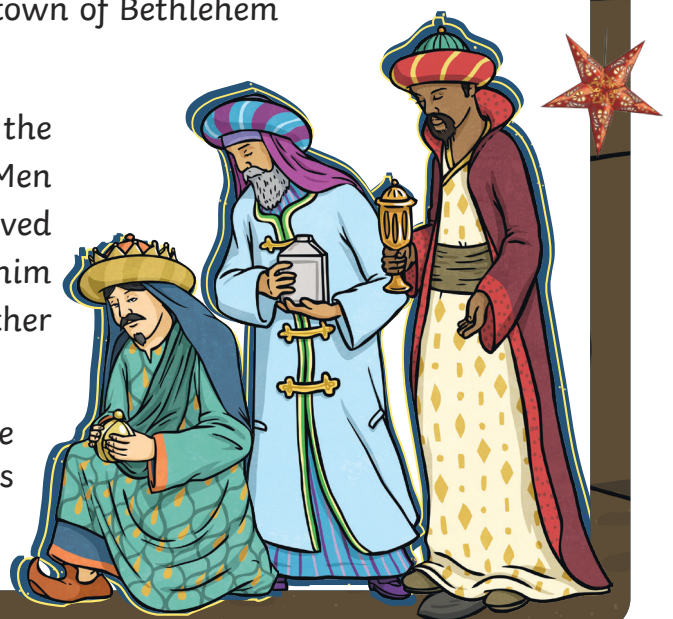
The Wise Men are often called the Three Kings.

The Journey

The journey would have been long and difficult. It is likely that the men travelled on camels, across deserts and over mountains in extreme weather. The star led them to the town of Bethlehem in Israel.

The star came to rest over the place where the baby Jesus was. It is often thought the Wise Men found Jesus in a stable but the Wise Men arrived much later after Jesus was born. They found him living in a house in Bethlehem with his mother and father.

Jesus was believed to be the son of God so the Wise Men took special gifts to celebrate his birth.



Gold

A precious metal and a sign of wealth. The Wise Men gave it as a sign of their love for Jesus as the King of kings.



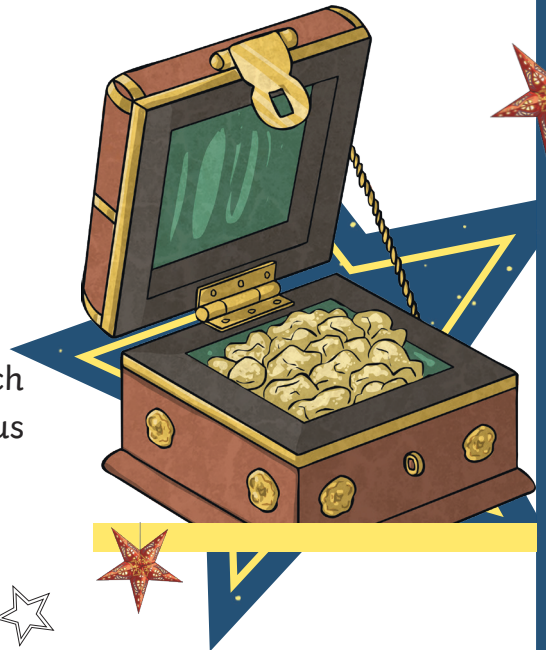
Frankincense

A strong-smelling gum from an African tree which could be burnt as incense. This gift showed Jesus that the Wise Men had faith in him.



Myrrh

From the sap of another African tree. The Wise Men gave this to show Jesus that they wanted to obey him as the new king.



Epiphany Traditions Around the World

In Belgium, some children dress up as the Wise Men and visit people's houses singing songs. They may be given money, sweets or chocolate.

In Spanish-speaking countries, Epiphany is known as 'Día de los Reyes'. Some children fill their shoes with straw and leave them outside for the camels belonging to the Wise Men.



1. What does the word 'Epiphany' mean?

2. When is Epiphany celebrated? Tick one.

- ☐ 7th January
- ☐ 12th January
- ☐ 6th January
- ☐ 8th January

3. Which of these statements is true? Tick one.

- ☐ The star led the Wise Men to a stable.
- ☐ The Bible says there were Three Wise Men.
- ☐ They brought frankincense as a sign of their love for Jesus.
- ☐ In Belgium, some children dress up as the Wise Men and visit people's houses.

4. Underline one word in the quotation below that suggests that the event was likely to happen in the future.

The writings predicted that one day there would be a great star and it would mean that a new king had been born.

5. Fill in the missing word.

The star led them to the town of Bethlehem in _____.

6. Draw **four** lines to match the facts to make them correct.

Dia de los Reyes is...

a precious metal and a sign of wealth.

Frankincense is...

what Epiphany is known as in Spanish-speaking countries.

Myrrh is...

a strong-smelling gum from an African tree which could be burnt as incense.

Gold is...

the sap from an African tree.

7. **The journey for the Wise Men was long and difficult.**
Why do you think they didn't give up and turn around?

8. Which of the Epiphany traditions around the world would you most like to do?
Explain your answer.

1. What does the word 'Epiphany' mean?

The word Epiphany comes from a Greek word that means 'appearance'.

2. When is Epiphany celebrated? Tick one.

- ☐ 7th January
- ☐ 12th January
- ☒ **6th January**
- ☐ 8th January

3. Which of these statements is true? Tick one.

- ☐ The star led the Wise Men to a stable.
- ☐ The Bible says there were Three Wise Men.
- ☐ They brought frankincense as a sign of their love for Jesus.
- ☒ **In Belgium, some children dress up as the Wise Men and visit people's houses.**

4. Underline one word in the quotation below that suggests that the event was likely to happen in the future.

*The writings **predicted** that one day there would be a great star and it would mean that a new king had been born.*

Award 1 mark for:

- **predicted**

5. Fill in the missing word.

The star led them to the town of Bethlehem in **Israel**.

6. Draw **four** lines to match the facts to make them correct.

Dia de los Reyes is...	a precious metal and a sign of wealth.
Frankincense is...	what Epiphany is known as in Spanish-speaking countries.
Myrrh is...	a strong-smelling gum from an African tree which could be burnt as incense.
Gold is...	the sap from an African tree.

7. **The journey for the Wise Men was long and difficult.**

Why do you think they didn't give up and turn around?

Pupils' own responses, such as: I believe the wise men kept going on their difficult journey because they believed in the religious writings they had seen and wanted to meet this new, important king.

8. Which of the Epiphany traditions around the world would you most like to do?

Explain your answer.

Pupils' own responses, such as: I would like to celebrate Epiphany like the children in Belgium because I like dressing up and I enjoying singing songs so I think it would be fun.

Epiphany

Epiphany comes from the Greek word 'epiphaneia', meaning 'appearance'. The feast of Epiphany is a Christian celebration which usually takes place in churches on 6th January. Epiphany marks the end of the 12 days of Christmas. It is a celebration of the baby Jesus being seen by the visitors who had travelled to see him.

The Visitors

Some men were studying the stars and constellations with their telescopes. One night, they saw a star which they were very intrigued by. The men were intelligent and understood the religious writings and books that had been written many years before. The writings predicted that one day there would be a great star and it would mean that a new king had been born. The new king would be the king to save all people. The men were incredibly excited. They packed up their belongings and followed the star. These men are known as the Wise Men.

The Journey

The journey would have been long and difficult. It is likely that the men travelled on camels, across deserts and over mountains in extreme weather. The star led them to the town of Bethlehem in Israel.

The star came to rest over the place where the baby Jesus was. It is often thought that the Wise Men found Jesus in a stable but the Wise Men arrived much later after Jesus was born. They found him living in a house in Bethlehem with his mother and father.

Jesus was believed to be the son of God so the Wise Men took special gifts to celebrate his birth.



The Wise Men lived in the east so were possibly from Persia, which is now called Iran.

The Bible never mentions how many Wise Men there were. People assume that there may have been three men because there were three gifts.

The Wise Men are often referred to as the Three Kings.

Gold

A precious metal and a sign of wealth. The Wise Men gave it as a sign of their love for Jesus as the King of kings.

Frankincense

A strong-smelling gum from an African tree which could be burnt as incense. This gift showed Jesus that the Wise Men had faith in him.

Myrrh

This is taken from the sap of a thorny, African tree. It was used as an antiseptic for soothing sores and relieving pain. The Wise Men gave this to show Jesus that they wanted to obey him as the new king.

Epiphany Traditions Around the World

In Belgium, some children dress up as the Wise Men and visit different houses singing songs. They may be given money, sweets or chocolate.

In Spanish-speaking countries, Epiphany is known as 'Dia de los Reyes'. Some children fill their shoes with straw and leave them outside for the animals belonging to the Wise Men.

In Mexico, a special cake called a 'Rosca de Reyes' is eaten. A figure of the baby Jesus is hidden inside and whoever is served the piece containing it will become 'godparent' of Jesus for the coming year.



1. Where does the word 'Epiphany' come from? Tick one.
 - ☐ the Greek word 'epiphaneia'
 - ☐ the Christian celebration
 - ☐ it was the name of one of the Wise Men
 - ☐ the Spanish word 'epiphaneia'
2. Which of these statements are true? Tick **two**.
 - ☐ Epiphany celebrates when Jesus visits the Wise men.
 - ☐ Epiphany takes place on 6th January.
 - ☐ Epiphany marks the beginning of the 12 days of Christmas.
 - ☐ Epiphany is a Christian celebration.
3. Why is it assumed that there may have been three Wise Men?

4. Underline one word in the quotation below that shows that the Wise Men were interested in the star.
One night, they saw a star which they were very intrigued by.
5. Fill in the missing word.
Jesus was believed to be the son of _____ so the Wise Men took special gifts to celebrate his birth.
6. Which of the three gifts given by the Wise Men do you think is the most important?
Explain your answer.

7. Why do you think the Wise men made the long and difficult journey to follow the star?

8. Which of the Epiphany traditions around the world would you most like to do?
Explain your answer.

1. Where does the word 'Epiphany' come from? Tick one.
 - ☒ **the Greek word 'epiphaneia'**
 - ☐ the Christian celebration
 - ☐ it was the name of one of the Wise Men
 - ☐ the Spanish word 'epiphaneia'
2. Which of these statements are true? Tick **two**.
 - ☐ Epiphany celebrates when Jesus visits the Wise men.
 - ☒ **Epiphany takes place on 6th January.**
 - ☐ Epiphany marks the beginning of the 12 days of Christmas.
 - ☒ **Epiphany is a Christian celebration.**
3. Why is it assumed that there may have been three Wise Men?
As there were three gifts, people assume that there may have been three men.
4. Underline one word in the quotation below that shows that the Wise Men were interested in the star.
One night, they saw a star which they were very intrigued by.
Award 1 mark for:
 - **intrigued**
5. Fill in the missing word.
Jesus was believed to be the son of **God** so the Wise Men took special gifts to celebrate his birth.
6. Which of the three gifts given by the Wise Men do you think is the most important? Explain your answer.
Pupils' own responses, such as: I think that frankincense is the most important gift because it showed that the Wise Men had faith in Jesus. This showed Jesus that they believed in Him and trusted Him.
7. Why do you think the Wise men made the long and difficult journey to follow the star?
Pupils' own responses, such as: I believe that the Wise Men made the long and dangerous journey because they beleived in the religious writings they had seen and were determined to meet this new, important king.
8. Which of the Epiphany traditions around the world would you most like to do? Explain your answer.
Pupils' own responses, such as: I would enjoy the tradition of eating the Rosca de Reyes cake in Mexico because I think it would be exciting to see who got the piece with the figure of Jesus inside.