

# All About Penguins

Penguins are seabirds and there are 18 different species of them. The largest species of penguin is called the emperor penguin and it can measure up to 120cm. The smallest penguin is known as either the blue penguin, little penguin or fairy penguin and it grows to around 30cm.

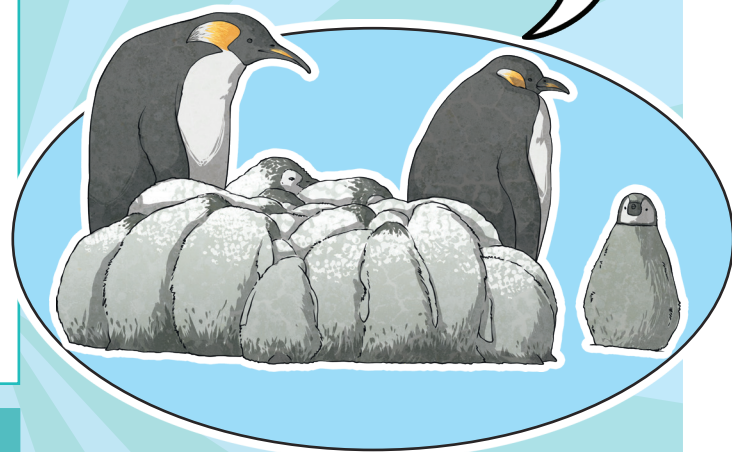
## What Do Penguins Look Like?

Adult penguins have black bodies and white stomachs. Baby penguins are known as chicks and they are born with grey, white or brown feathers.

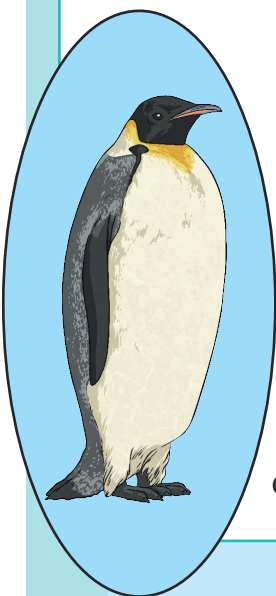
Penguins' bodies have a thick layer of **blubber** and their feathers are oily. This helps keep water out and traps warm air against the skin. Penguins have webbed feet and stiff flippers which help them dive and swim quickly in the sea.

## Did You Know...?

A group of penguins on land can be called a colony, a rookery or a huddle.



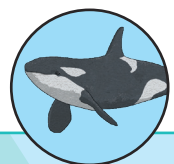
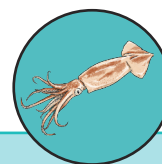
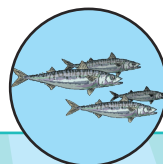
## Where Do Penguins Live?



Most penguins live in the southern **hemisphere** and they generally live on islands or near the coast. Many penguins live in cold regions, such as Antarctica. Some species are found in warmer climates, such as the Galapagos penguin, which lives off the coast of Ecuador.

## What Do Penguins Eat?

Penguins generally eat small sea creatures, such as fish, squid and **krill**. They can spend up to 75% of their lives in the water and they spend a lot of their time hunting for prey.

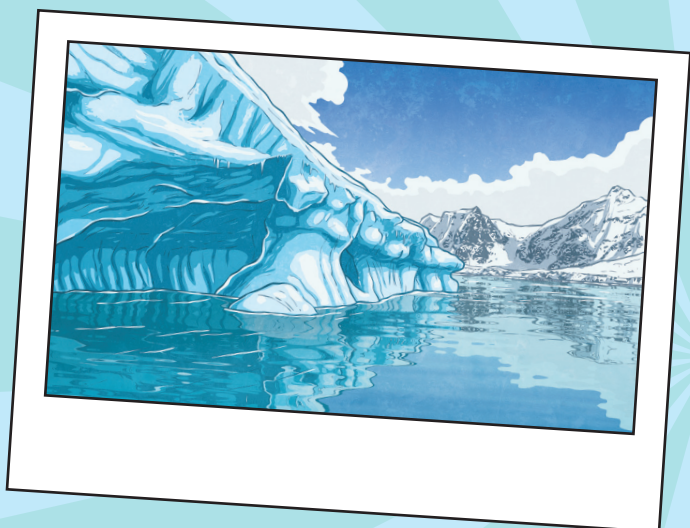
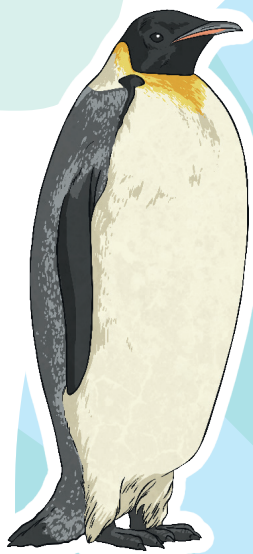


# All About Penguins

## How Do Penguins Behave?

Penguins cannot fly and they waddle on land because they have short legs. Penguins can move across the ice or snow quickly by 'tobogganing'. This is when the penguin slides on their stomach and pushes with their feet.

Male and female penguins take it in turns to look after their eggs but emperor penguin eggs are only looked after by the males. Penguins balance the eggs on their feet and cover them with a feathered pouch.



## What Are the Threats to Penguins?

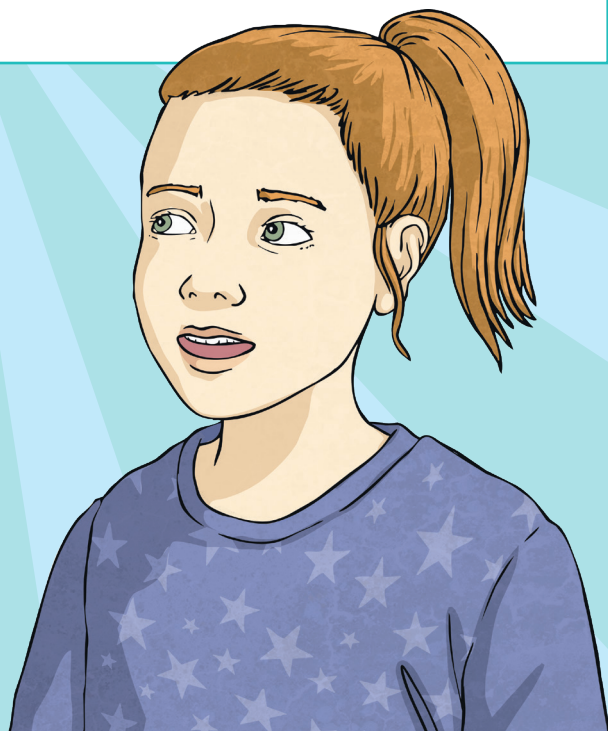
Some species of penguins are at risk due to overfishing and climate change. Penguins may be forced to search for new places to live if ice continues to melt due to rising temperatures.

## Glossary

**blubber:** The fat of some sea creatures.

**hemisphere:** One half of the Earth.

**krill:** Small shellfish.



# Questions

1. What is it called when penguins move across the ice or snow quickly on their stomachs?

Tick one.

- ☐ sledging
- ☐ skiing
- ☐ surfing
- ☐ tobogganing

2. Draw **four** lines to complete each sentence.

Penguins are seabirds...

overfishing and climate change.

A group of penguins on land can be called...

such as Antarctica.

Many penguins live in cold regions,...

a colony, a rookery or a huddle.

Some species of penguins are at risk due to...

and there are 18 different species of them.

3. What helps penguins swim quickly? Tick **two**.

- ☐ sharp bill
- ☐ webbed feet
- ☐ their height
- ☐ stiff flippers

4. Number the facts from 1-4 to show the order in which they appear in the text.

- ☐ Penguins generally live on islands or near the coast.
- ☐ Penguins balance the eggs on their feet.
- ☐ The largest species of penguin is called the emperor penguin.
- ☐ Penguins can spend up to 75% of their lives in the water.

5. How do chicks look different from adult penguins?

---

6. Fill in the missing word.

Penguins cannot fly and they \_\_\_\_\_ on land because they have short legs.

7. Why do you think it is important that penguins' feathers help keep water out?

---

---

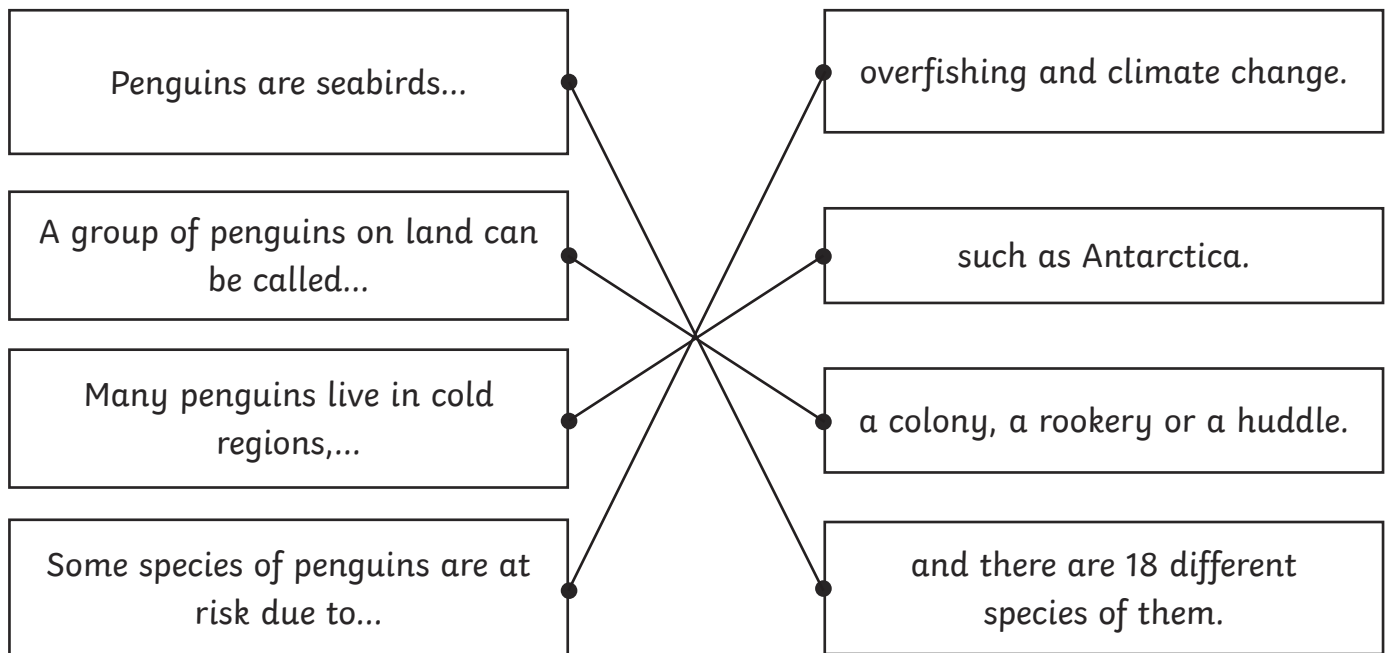
---

# Answers

1. What is it called when penguins move across the ice or snow quickly on their stomachs?  
Tick one.

- ☐ sledging  
☐ skiing  
☐ surfing  
☒ **tobogganing**

2. Draw **four** lines to complete each sentence.



3. What helps penguins swim quickly? Tick **two**.

- ☐ sharp bill  
☒ **webbed feet**  
☐ their height  
☒ **stiff flippers**

4. Number the facts from 1-4 to show the order in which they appear in the text.

- 2** Penguins generally live on islands or near the coast.  
**4** Penguins balance the eggs on their feet.  
**1** The largest species of penguin is called the emperor penguin.  
**3** Penguins can spend up to 75% of their lives in the water.

5. How do chicks look different from adult penguins?

**Chicks have brown, grey or white feathers and adult penguins have black bodies and white stomachs.**

6. Fill in the missing word.

Penguins cannot fly and they **waddle** on land because they have short legs.

7. Why do you think it is important that penguins' feathers help keep water out?

**Pupils' own responses, such as: I think it is important that penguins' feathers help keep water out because it will keep them warmer and help them dry quicker after they have been swimming.**



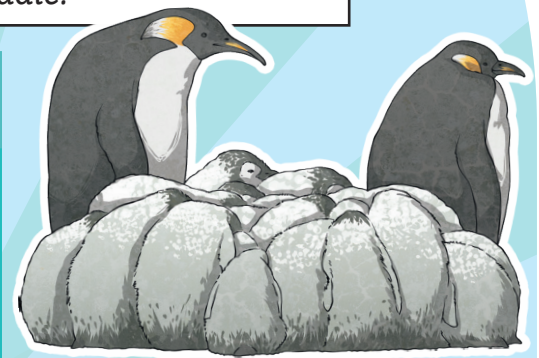
# All About Penguins

Penguins are seabirds and there are 18 different species of them. The largest species of penguin is called the emperor penguin and it can measure up to 120cm. The smallest penguin is known as either the blue penguin, little penguin or fairy penguin and it grows to around 30cm. A group of penguins on land can be called a colony, a rookery or a huddle.

## What Do Penguins Look Like?

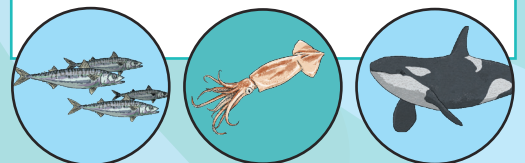
Adult penguins have black bodies and white stomachs. The colouration of their feathers helps them to camouflage and protect themselves from predators, such as leopard seals, sharks and orcas. Baby penguins are known as chicks and they are born with grey, white or brown feathers.

Penguins' bodies have a thick layer of **blubber** and their feathers are oily. This helps keep water out and traps warm air against the skin. Additionally, penguins have webbed feet and stiff flippers which help them dive and swim quickly in the sea.



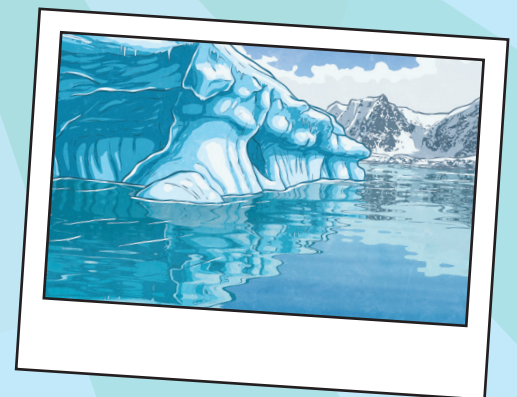
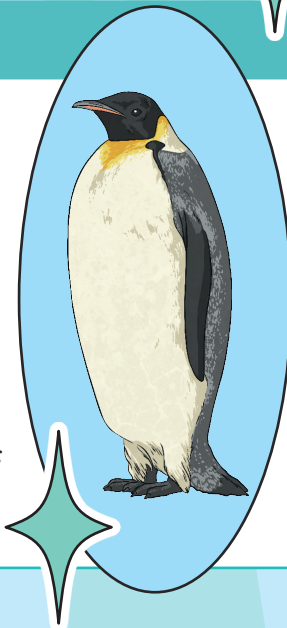
## What Do Penguins Eat?

Penguins generally eat small sea creatures, such as fish, squid and **krill**. Amazingly, they can spend up to 75% of their lives in the water and they spend a lot of their time hunting for prey.



## Where Do Penguins Live?

Most penguins live in the southern hemisphere and they generally live on islands or near the coast. Many penguins live in cold regions, such as Antarctica. However, some species are found in warmer climates, such as the Galapagos penguin, which lives off the coast of Ecuador.

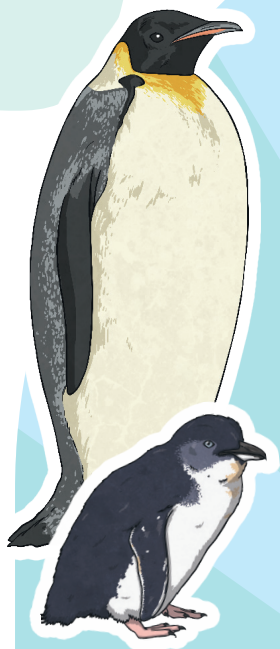


# All About Penguins

## How Do Penguins Behave?

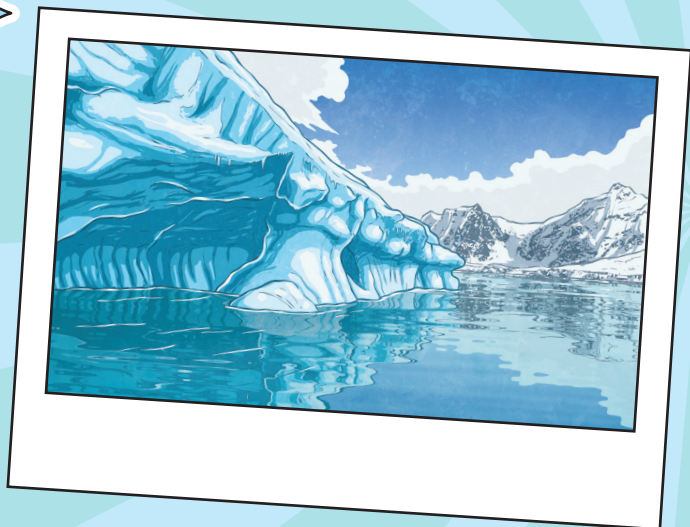
Penguins cannot fly and they waddle on land because they have short legs. Penguins can move across the ice or snow quickly by 'tobogganing'. This is when the penguin slides on their stomach and pushes with their feet.

Depending on the species, female penguins lay between one and three eggs. Emperor penguin eggs are only looked after by the males. In all other species, the male and female penguins take it in turns to look after the eggs. While one penguin looks after the egg, the other travels to the sea and goes hunting. Penguins look after the eggs by balancing them on their feet and covering them with a feathered pouch.



## What Are the Threats to Penguins?

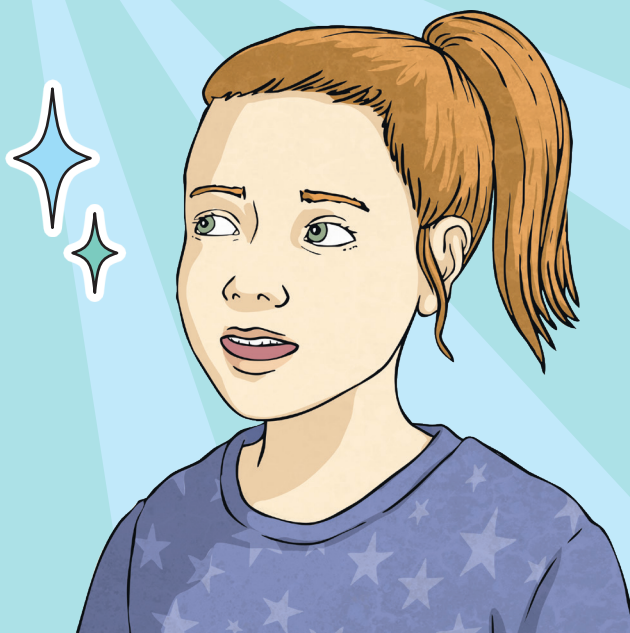
Unfortunately, some species of penguins are at risk due to overfishing. Climate change is a threat to some penguins' habitats in Antarctica. As ice melts due to rising temperatures, penguins may be forced to search for new places to live.



## Glossary

**blubber:** The fat of some sea creatures.

**krill:** Small shellfish.





# Questions

1. How tall does the blue penguin grow to? Tick one.

- ☐ around 10cm
- ☐ around 30cm
- ☐ around 90cm
- ☐ around 120cm

2. Draw **four** lines to match the sub-heading to the corresponding sentence.

**What Do Penguins Look Like?**

Penguins cannot fly and they waddle on land because they have short legs.

**Where Do Penguins Live?**

Penguins' bodies have a thick layer of blubber and their feathers are oily.

**How Do Penguins Behave?**

As ice melts due to rising temperatures, penguins may be forced to search for new places to live.

**What Are the Threats to Penguins?**

However, some species are found in warmer climates, such as the Galapagos penguin, which lives off the coast of Ecuador.

3. Number the facts from 1-4 to show the order in which they appear in the text.

- ☐ Penguins spend a lot of their time hunting for prey.
- ☐ A group of penguins on land can be called a colony, a rookery or a huddle.
- ☐ Penguins have webbed feet and stiff flippers which help them dive and swim quickly in the sea.
- ☐ Depending on the species, female penguins lay between one and three eggs.

4. Underline one word in the quotation below which suggests that the author is sad about the threats to penguins.

*Unfortunately, some species of penguins are at risk due to overfishing.*

5. Fill in the missing word.

Climate change is a threat to some penguins' \_\_\_\_\_ in Antarctica.

6. Look at the sub-heading **What Do Penguins Eat?** Find and copy one word which means the same as 'normally'.

\_\_\_\_\_

7. Why do you think a penguin slides across the ice or snow on its stomach?

\_\_\_\_\_  
\_\_\_\_\_  
\_\_\_\_\_

8. Why do you think the penguin covers the egg with a feathered pouch?

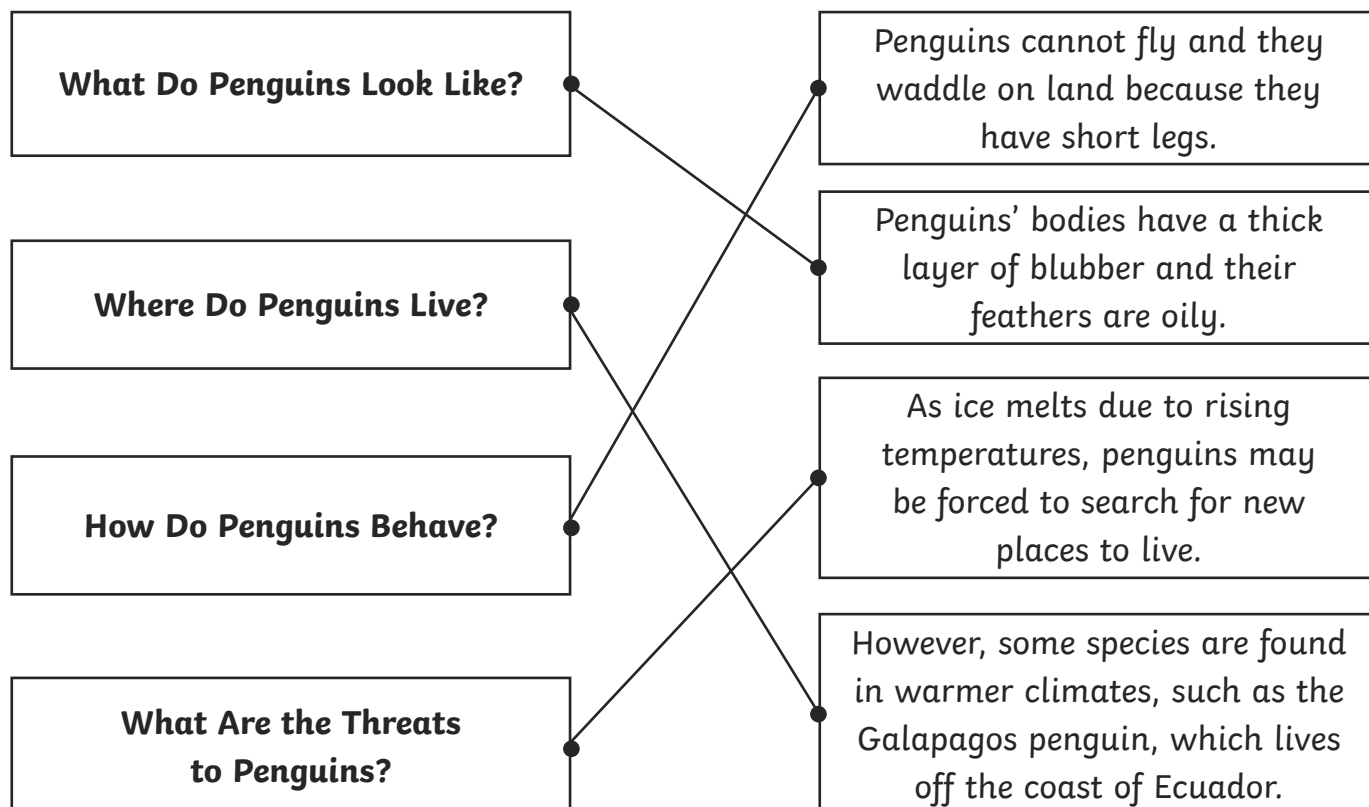
\_\_\_\_\_  
\_\_\_\_\_  
\_\_\_\_\_

# Answers

1. How tall does the blue penguin grow to? Tick one.

- ☐ around 10cm
- ☒ **around 30cm**
- ☐ around 90cm
- ☐ around 120cm

2. Draw **four** lines to match the sub-heading to the corresponding sentence.



3. Number the facts from 1-4 to show the order in which they appear in the text.

- 3** Penguins spend a lot of their time hunting for prey.
- 1** A group of penguins on land can be called a colony, a rookery or a huddle.
- 2** Penguins have webbed feet and stiff flippers which help them dive and swim quickly in the sea.
- 4** Depending on the species, female penguins lay between one and three eggs.

4. Underline one word in the quotation below which suggests that the author is sad about the threats to penguins.

Unfortunately, some species of penguins are at risk due to overfishing.

Award 1 mark for:

- **Unfortunately**

5. Fill in the missing word.

Climate change is a threat to some penguins' **habitats** in Antarctica.

6. Look at the sub-heading **What Do Penguins Eat?** Find and copy one word which means the same as 'normally'.

**generally**

7. Why do you think a penguin slides across the ice or snow on its stomach?

**Pupils' own responses, such as: I think a penguin slides across the ice or snow on its stomach so that it can get to places on land quicker because it cannot walk very fast.**

8. Why do you think the penguin covers the egg with a feathered pouch?

**Pupils' own responses, such as: I think the penguin covers the egg with a feathered pouch to keep it warm because the weather is often very cold where penguins live.**

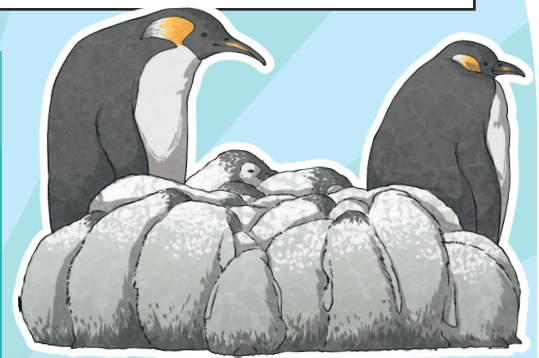
# All About Penguins

Penguins are seabirds and there are 18 different species of them. The largest species of penguin is called the emperor penguin and it can measure up to 120cm. The smallest penguin is known as either the blue penguin, little penguin or fairy penguin and it grows to around 30cm. A group of penguins on land can be called a colony, a rookery or a huddle while a group of swimming penguins is called a raft.

## What Do Penguins Look Like?

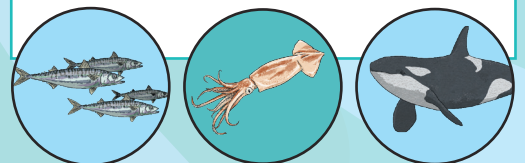
Adult penguins can be recognised by their black bodies and white stomachs. The colouration of their feathers helps them camouflage and protect themselves from predators, such as leopard seals, sharks and orcas. Baby penguins are known as chicks and they are born with grey, white or brown feathers.

To protect them from cold temperatures, penguins' bodies have a thick layer of **blubber** and their feathers are oily. This helps keep water out and traps warm air against the skin. Additionally, penguins' bodies are adapted to help them dive and swim quickly in the sea. They have webbed feet, stiff flippers and sleek-shaped bodies.



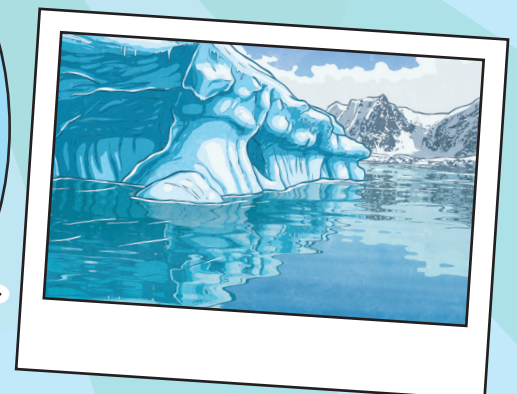
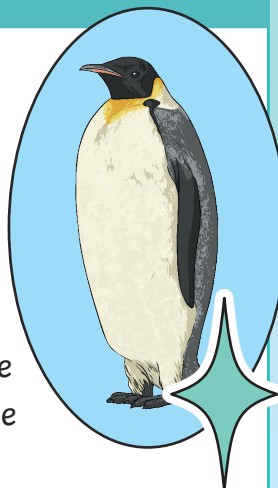
## What Do Penguins Eat?

Penguins generally eat small sea creatures, such as fish, squid and **krill**. Amazingly, they can spend up to 75% of their lives in the water and they spend a lot of their time hunting for prey.



## Where Do Penguins Live?

The majority of penguins live in the southern hemisphere and they generally live on islands or remote regions near the coast. Most penguins live in cold regions, such as Antarctica. However, some species are found in warmer climates, such as the Galapagos penguin, which lives off the coast of Ecuador.



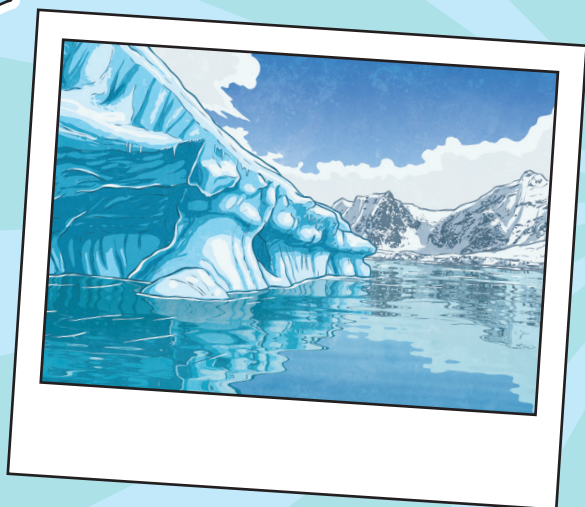


# All About Penguins

## How Do Penguins Behave?

Penguins cannot fly and they waddle on land because they have short legs. Penguins move across the ice or snow quickly by 'tobogganing'. This is when the penguin slides on their stomach and pushes with their feet. They use their flippers to help them move and balance.

Penguins often keep warm by huddling together and they breed in large groups called nesting colonies. Depending on the species, female penguins lay between one and three eggs. Emperor penguin eggs are only looked after by the males. In all other species, the male and female penguins take it in turns to look after the eggs. While one penguin looks after the egg, the other travels to the sea and goes hunting. Penguins look after the eggs by balancing them on their feet and covering them with a feathered pouch to keep them warm.



## What Are the Threats to Penguins?

Unfortunately, there are a number of threats that penguins face in the wild. Some species are at risk due to overfishing. Additionally, climate change is thought by many people to be the biggest threat to the penguin population in Antarctica. As ice melts in the polar regions due to rising temperatures, penguins may be forced to search for new habitats.

## Glossary

**blubber:** The fat of some sea creatures.

**krill:** Small shellfish.



# Questions

1. Which of the following are predators of penguins? Tick **three**.

- ☐ leopard seals
- ☐ squid
- ☐ sharks
- ☐ orcas

2. Underline one word in the quotation below that suggests that penguins walk by moving side to side.

*Penguins cannot fly and they waddle on land because they have short legs.*

3. Fill in the missing words.

Penguins often keep warm by \_\_\_\_\_ together and they breed in large groups called nesting \_\_\_\_\_.

4. Look at the sub-heading **What Do Penguins Look Like?** Find and copy one word which shows that penguins try to blend in with their surroundings.

\_\_\_\_\_

5. Name **two** ways that penguins' bodies are adapted to help them swim quickly.

- \_\_\_\_\_
- \_\_\_\_\_

6. Why do you think overfishing is a threat for penguins?

\_\_\_\_\_  
\_\_\_\_\_  
\_\_\_\_\_

7. Compare penguins with another bird. Explain one way in which they are similar and one way in which they are different.

---

---

---

8. **Unfortunately, there are a number of threats that penguins face in the wild.**

What does the word 'unfortunately' tell us about how the author feels about the threats that penguins face?

---

---

---

# Answers

1. Which of the following are predators of penguins? Tick **three**.

- ☒ **leopard seals**
- ☐ squid
- ☒ **sharks**
- ☒ **orcas**

2. Underline one word in the quotation below that suggests that penguins walk by moving side to side.

*Penguins cannot fly and they waddle on land because they have short legs.*

**Award 1 mark** for:

- **waddle**

3. Fill in the missing words.

Penguins often keep warm by **huddling** together and they breed in large groups called nesting **colonies**.

4. Look at the sub-heading **What Do Penguins Look Like?** Find and copy one word which shows that penguins try to blend in with their surroundings.

**camouflage**

5. Name **two** ways that penguins' bodies are adapted to help them swim quickly.

**Accept any two answers from the following: webbed feet; stiff flippers; sleek-shaped bodies.**

6. Why do you think overfishing is a threat for penguins?

**Pupils' own responses, such as: I think that overfishing is a threat for penguins because there will be less fish for them to eat so they will need to compete against each other for food.**

7. Compare penguins with another bird. Explain one way in which they are similar and one way in which they are different.

**Pupils' own responses, such as: Penguins are similar to herons because they eat fish. They are different because penguins cannot fly.**

8. **Unfortunately, there are a number of threats that penguins face in the wild.**

What does the word 'unfortunately' tell us about how the author feels about the threats that penguins face?

**Pupils' own responses, such as: I think the word 'unfortunately' tells us that the author is worried and feels sad about how penguins face different threats in the wild.**