



Lent is an important time for many Christians and it lasts for 40 days but doesn't include Sundays. The Bible says that this is the length of time that Jesus spent in the desert **fasting** and being tempted by the devil. Many Christians used to fast in Lent to reflect on Jesus' life but now many choose to give up a luxury item like chocolate instead.

Ash Wednesday

Ash Wednesday is the first day of Lent for many Christians and it is a time for forgiveness. Ashes are blessed in church and then a cross-shaped mark is placed on worshippers' foreheads.



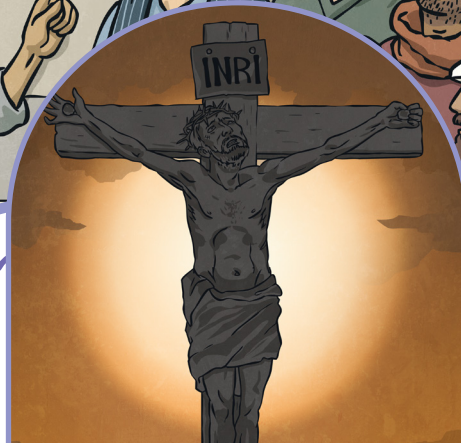
Palm Sunday

The Bible states that this is when Jesus entered Jerusalem riding on a donkey and the crowd welcomed him by waving palm leaves. Some churches give out small crosses made from palm leaves to remember this day.



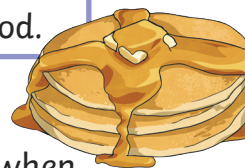
Maundy Thursday

Christians remember when Jesus and his followers shared their final meal together and this is known as the Last Supper. Jesus washed the feet of his friends as an act of respect. They shared bread and wine and Jesus told his followers to do this to remember him after his death.



Did You Know...?

Pancakes were often served the day before Lent to use up food.

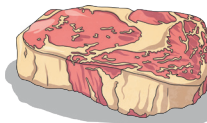


Good Friday

Christians believe that this is when Jesus died and gave up his life for others. Roman soldiers nailed Jesus to a cross after he had carried it for a long distance. Some Christians avoid eating meat on this day.

Easter Sunday

Easter Sunday marks the end of Lent. Christians consider it to be a joyful time because they believe that this is when Jesus rose from the dead. It also represents the promise of life in heaven. The Bible says that one of Jesus' followers went to visit the tomb where Jesus' body was placed after his death but it was empty. Christians believe that Jesus was seen later that day and several times after this by his followers.



Did You Know...?

Easter eggs are shared on Easter Sunday to symbolise new life.



Glossary

fasting: To avoid all or some kinds of food or drink.

Questions

1. Which food was often served the day before Lent? Tick one.

- ☐ fish
- ☐ pancakes
- ☐ potatoes
- ☐ Easter eggs

2. Number the events from 1-4 to show the order in which they appear in the text.

- ☐ A cross-shaped mark is placed on worshippers' foreheads.
- ☐ Easter Sunday is seen as a joyful time by Christians.
- ☐ Christians believe that Jesus entered Jerusalem riding on a donkey.
- ☐ Jesus washed the feet of his friends.

3. Draw **four** lines and complete each sentence.

Lent is an important time
for many Christians and...

small crosses made from
palm leaves.

Some churches give out...

Jesus told his followers to
do this to remember him.

They shared bread
and wine and...

marks the end of Lent.

Easter Sunday...

it lasts for 40 days but
doesn't include Sundays.

4. Which day was the Last Supper on? Tick one.

- ☐ Ash Wednesday
- ☐ Palm Sunday
- ☐ Maundy Thursday
- ☐ Good Friday

5. Fill in the missing word.

Christians _____ when Jesus and his followers shared their final meal together.

6. What do some Christians do on Good Friday?

7. What luxury food or drink item would you find difficult to give up? Why?

Answers

1. Which food was often served the day before Lent? Tick one.

- ☐ fish
- ☒ **pancakes**
- ☐ potatoes
- ☐ Easter eggs

2. Number the events from 1-4 to show the order in which they appear in the text.

- 1** A cross-shaped mark is placed on worshippers' foreheads.
- 4** Easter Sunday is seen as a joyful time by Christians.
- 2** Christians believe that Jesus entered Jerusalem riding on a donkey.
- 3** Jesus washed the feet of his friends.

3. Draw **four** lines and complete each sentence.

Lent is an important time for many Christians and...	small crosses made from palm leaves.
Some churches give out...	Jesus told his followers to do this to remember him.
They shared bread and wine and...	marks the end of Lent.
Easter Sunday...	it lasts for 40 days but doesn't include Sundays.

4. Which day was the Last Supper on? Tick one.

- ☐ Ash Wednesday
- ☐ Palm Sunday
- ☒ **Maundy Thursday**
- ☐ Good Friday

5. Fill in the missing word.

Christians **remember** when Jesus and his followers shared their final meal together.

6. What do some Christians do on Good Friday?

Some Christians avoid eating meat on Good Friday.

7. What luxury food or drink item would you find difficult to give up? Why?

Pupils' own responses, such as: I would find chocolate difficult to give up because I really like the taste of it and I often have it as a treat.



Lent

Lent is an important time for many Christians and it lasts for 40 days, excluding Sundays. According to the Bible, this is the length of time that Jesus spent in the desert **fasting** and being tempted by the devil. In the past, many Christians would fast in Lent to reflect on Jesus' life and avoid eating meat, eggs and butter. Nowadays, many Christians choose to give up a luxury item like chocolate instead. Traditionally, pancakes were often served the day before Lent to use up food.

Ash Wednesday

For many Christians, Ash Wednesday is the first day of Lent and it is a time for forgiveness. Many Christians celebrate this day by attending church. Ashes are blessed and then a cross-shaped mark is placed on worshippers' foreheads.

Palm Sunday

The Bible states that this is when Jesus arrived in Jerusalem riding on a donkey and the crowd welcomed him by waving palm leaves. Some churches give out small crosses made from palm leaves to remember this day.

Maundy Thursday

On Maundy Thursday, Christians remember when Jesus and his followers shared their final meal together. This is known as the Last Supper. During this meal, Jesus washed the feet of his friends as an act of love and respect. They shared bread and wine and Jesus told his followers to do this to remember him after his death. Later that night, Jesus was betrayed by one of his followers.



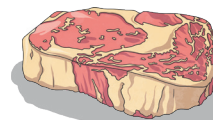
Good Friday

On Good Friday, Christians believe that Jesus died and gave up his life for others. Roman soldiers nailed Jesus to a cross after he had carried it for a long distance. Some Christians avoid eating meat on this day.

Easter Sunday

Christians consider Easter Sunday to be the most important event and it marks the end of Lent. It is when they celebrate the **resurrection** of Jesus. The Bible says that Jesus' body was placed in a tomb after his death. This was guarded by soldiers and its entrance was covered by a heavy stone. However, one of Jesus' followers found that the stone had been moved when she went to visit him and the tomb was empty. Christians believe that Jesus was seen several times after this.

Christians consider Easter Sunday to be a joyful occasion because it represents the promise of life in heaven. Traditionally, people would end their fasting and Easter eggs are often shared to symbolise new life.



Glossary

fasting: To avoid all or some kinds of food or drink.

resurrection: The act or fact of rising back to life after death.

Questions

1. On which day do Christians have a cross-shaped mark placed on their forehead? Tick one.

- ☐ Ash Wednesday
- ☐ Palm Sunday
- ☐ Maundy Thursday
- ☐ Good Friday

2. Number the events from 1-4 to show the order in which they appear in the text.

- ☐ Lent lasts for 40 days, excluding Sundays.
- ☐ Christians believe that the stone of Jesus' tomb had been moved and it was empty.
- ☐ A crowd welcomed Jesus into Jerusalem with palm leaves.
- ☐ Jesus shared bread and wine with his followers.

3. Draw **four** lines and complete each sentence.

In the past, many Christians would fast in Lent to reflect on Jesus' life...

on Good Friday.

On Maundy Thursday, Christians remember when...

and avoid eating meat, eggs and butter.

Some Christians avoid eating meat...

to symbolise new life.

Easter eggs are often shared...

Jesus and his followers shared their final meal together.

4. Look at the first paragraph.

Which word means the same as 'not including'. Tick one.

- ☐ excluding
- ☐ tempted
- ☐ nowadays
- ☐ luxury

5. What do some churches give out on Palm Sunday?

6. Look at the section **Maundy Thursday**.

Find and copy a word which means the same as 'to be disloyal' or 'to break someone's trust'.

7. Why do you think many Christians choose to give up a luxury item like chocolate?

8. Why do you think the author chose to include the information from the Bible about how Jesus' tomb was guarded by soldiers and how a heavy stone was placed in front of it?

Answers

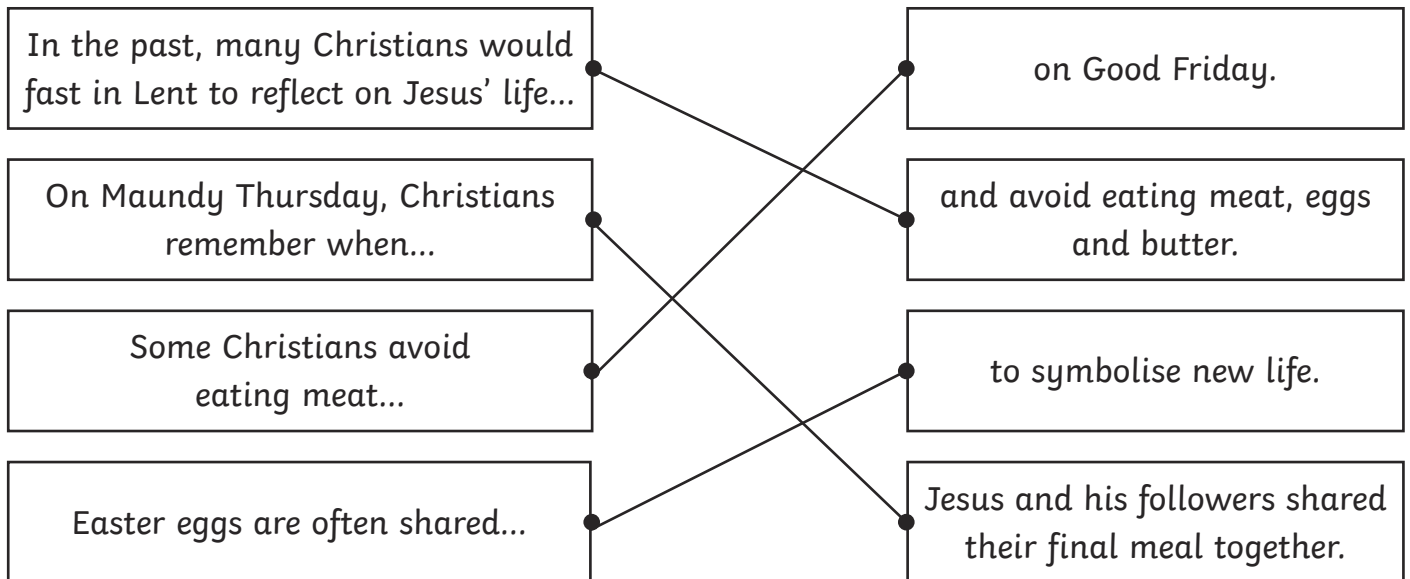
1. On which day do Christians have a cross-shaped mark placed on their forehead? Tick one.

- ☒ **Ash Wednesday**
- ☐ Palm Sunday
- ☐ Maundy Thursday
- ☐ Good Friday

2. Number the events from 1-4 to show the order in which they appear in the text.

- 1** Lent lasts for 40 days, excluding Sundays.
- 4** Christians believe that the stone of Jesus' tomb had been moved and it was empty.
- 2** A crowd welcomed Jesus into Jerusalem with palm leaves.
- 3** Jesus shared bread and wine with his followers.

3. Draw **four** lines and complete each sentence.



4. Look at the first paragraph.

Which word means the same as 'not including'. Tick one.

- ☒ **excluding**
- ☐ tempted
- ☐ nowadays
- ☐ luxury

5. What do some churches give out on Palm Sunday?

Some churches give out small crosses made from palm leaves.

6. Look at the section **Maundy Thursday**.

Find and copy a word which means the same as 'to be disloyal' or 'to break someone's trust'.

betrayed

7. Why do you think many Christians choose to give up a luxury item like chocolate?

Pupils' own responses, such as: I think many Christians choose to give up a luxury item like chocolate because it is hard to go without it for so long. I think this is to remind themselves of how Jesus may have felt in the desert.

8. Why do you think the author chose to include the information from the Bible about how Jesus' tomb was guarded by soldiers and how a heavy stone was placed in front of it?

Pupils' own responses, such as: I think the author chose to include this information because it shows how Christians believe how amazing this was when the tomb was later found empty and Jesus rose from the dead.

Lent

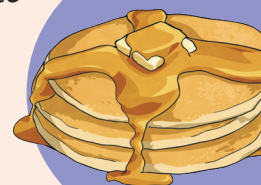
Lent is an important time of reflection for many Christians. It lasts for 40 days, excluding Sundays. According to the Bible, this represents the length of time that Jesus spent in the desert **fasting** and being tempted by the devil. In the past, many Christians would fast throughout Lent to reflect on Jesus' life and they would avoid rich foods in their diet, such as meat, eggs and butter. Nowadays, many Christians may choose to give up a luxury item like chocolate instead.

Ash Wednesday

For many Christians, Ash Wednesday is the first day of Lent and it is a time for forgiveness. Many Christians celebrate this day by attending church. Ashes are blessed and then a cross-shaped mark is placed on worshippers' foreheads.



Lent is always in spring but the exact date varies each year. Traditionally, the day before Lent was a time for feasting and pancakes would often be served to use up food. In the UK, this day is known as Shrove Tuesday.



Palm Sunday

Palm Sunday is the beginning of Holy Week, which is the last week of Lent.



The Bible states that this is when Jesus arrived in Jerusalem riding on a donkey and the crowd welcomed him by waving palm leaves. Some churches give out small crosses made from palm leaves to remember this day.



Maundy Thursday

On Maundy Thursday, Christians remember when Jesus and his disciples shared their final meal together; this is known as the Last Supper. During this meal, Jesus washed the feet of his disciples. Christians believe that Jesus was teaching his friends how to respect and love one another. They shared bread and wine and Jesus told his disciples to do this to remember him after his death. Later that night, Jesus was betrayed by one of his disciples.



Easter Sunday

Easter Sunday is considered to be the most important event in the Christian calendar. It is when Christians celebrate the **resurrection** of Jesus. The Bible says that Jesus' body was placed in a tomb after his death. This was guarded by soldiers and its entrance was covered by a heavy stone. When one of Jesus' followers visited the tomb, she found that the stone had been moved and his body had disappeared. According to the Bible, Jesus was seen later that day and several times afterwards.



Easter Sunday marks the end of Lent and church services are held to celebrate the day. Christians consider Easter Sunday to be a joyful occasion because it represents the promise of eternal life in heaven. Traditionally, people would end their fasting and Easter eggs are often shared to symbolise new life.

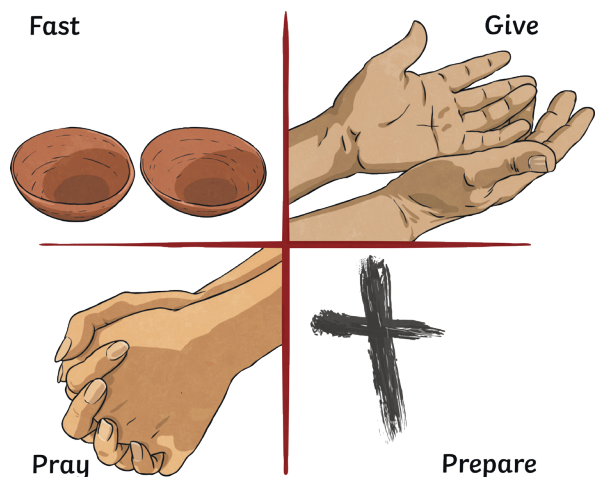
Good Friday

On Good Friday, Christians believe that Jesus died and gave up his life for others. Roman soldiers nailed Jesus to a cross after he had carried it for a long distance. Some Christians avoid eating meat on this day.

Glossary

fasting: To avoid all or some kinds of food or drink.

resurrection: The act or fact of rising back to life after death.



Questions

1. Lent is an important time of reflection for many Christians.

Which word is closest in meaning to the word 'reflection'? Tick one.

- ☐ family
- ☐ feasting
- ☐ celebration
- ☐ thinking

2. Draw **four** lines and match each sub-heading to the corresponding sentence from that section.

Ash Wednesday	Some churches give out small crosses.
Palm Sunday	During this meal, Jesus washed the feet of his disciples.
Maundy Thursday	It is when Christians celebrate the resurrection of Jesus.
Easter Sunday	It is the first day of Lent for many Christians and it is a time for forgiveness.

3. Fill in the missing word.

When one of Jesus' followers visited the tomb, she found that the stone had been moved and his body had _____.

4. What did Jesus and his disciples eat and drink during the Last Supper? List **two** items.

- _____
- _____

5. Look at the final paragraph.

Find and copy a word which means the same as 'everlasting'.

6. Summarise what you have learnt about Easter Sunday in 30 words or fewer.

7. **Nowadays, many Christians choose to give up a luxury item like chocolate instead.**

What impression does the author give the reader with the word 'luxury'?

8. Why do you think the symbol of a cross is applied to worshippers' foreheads on Ash Wednesday?

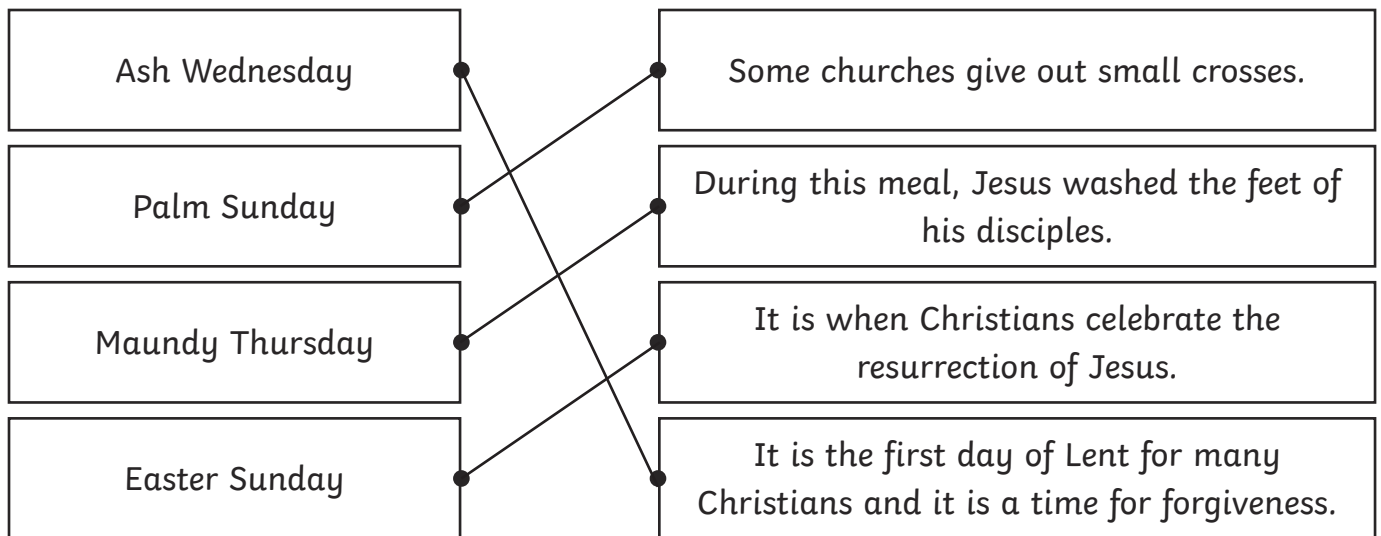
Answers

1. Lent is an important time of reflection for many Christians.

Which word is closest in meaning to the word 'reflection'? Tick one.

- ☐ family
- ☐ feasting
- ☐ celebration
- ☒ **thinking**

2. Draw **four** lines and match each sub-heading to the corresponding sentence from that section.



3. Fill in the missing word.

When one of Jesus' followers visited the tomb, she found that the stone had been moved and his body had **disappeared**.

4. What did Jesus and his disciples eat and drink during the Last Supper? List **two** items.

- **bread**
- **wine**

5. Look at the final paragraph.

Find and copy a word which means the same as 'everlasting'.

eternal

6. Summarise what you have learnt about Easter Sunday in 30 words or fewer.

Pupils' own responses, such as: Easter Sunday is a joyful time for Christians. They believe that this is when Jesus rose from the dead. It is the end of Lent and Easter eggs are shared.

7. Nowadays, many Christians choose to give up a luxury item like chocolate instead.

What impression does the author give the reader with the word 'luxury'?

Pupils' own responses, such as: The author gives the impression that the item is very special and a treat with their use of the word luxury. It suggests that someone really enjoys eating it.

8. Why do you think the symbol of a cross is applied to worshippers' foreheads on Ash Wednesday?

Pupils' own responses, such as: I think that the symbol of a cross is applied to worshippers' foreheads because a cross is associated with Jesus. This is because Christians believe he died on one. I think it reminds them to reflect on his life.